



Check for updates

## RESEARCH ARTICLE

**REVISED** RNA-Seq workflow: gene-level exploratory analysis and differential expression

[version 2; peer review: 2 approved]

Michael I. Love<sup>1</sup>, Simon Anders<sup>2,3</sup>, Vladislav Kim<sup>3</sup>, Wolfgang Huber<sup>id</sup><sup>3</sup><sup>1</sup>Department of Biostatistics and Computational Biology, Dana-Farber Cancer Institute and Department of Biostatistics, Harvard TH Chan School of Public Health, Boston, Massachusetts, USA<sup>2</sup>Institute for Molecular Medicine Finland, Helsinki, Finland<sup>3</sup>European Molecular Biology Laboratory, Heidelberg, Germany**V2** First published: 14 Oct 2015, 4:1070  
<https://doi.org/10.12688/f1000research.7035.1>Latest published: 17 Nov 2016, 4:1070  
<https://doi.org/10.12688/f1000research.7035.2>**Abstract**

Here we walk through an end-to-end gene-level RNA-Seq differential expression workflow using Bioconductor packages. We will start from the FASTQ files, show how these were aligned to the reference genome, and prepare a count matrix which tallies the number of RNA-seq reads/fragments within each gene for each sample. We will perform exploratory data analysis (EDA) for quality assessment and to explore the relationship between samples, perform differential gene expression analysis, and visually explore the results.

**Keywords**

RNA-seq , differential expression , gene expression , Bioconductor , statistical analysis , high-throughput sequencing , visualization , genomics



This article is included in the **Bioconductor** gateway.

**Open Peer Review****Approval Status** ✓ ✓

1

2

**version 2**

(revision)

17 Nov 2016

**version 1**

14 Oct 2015



view



view

1. **Davide Riso** <sup>id</sup>, University of California, Berkeley, Berkeley, USA

2. **Zhijin Wu**, Brown University, Providence, USA

Any reports and responses or comments on the article can be found at the end of the article.

**Corresponding author:** Michael I. Love ([mlove@jimmy.harvard.edu](mailto:mlove@jimmy.harvard.edu))

**Competing interests:** The authors declare that they have no competing interests.

**Grant information:** MIL is supported by NIH grant 5T32CA009337-35. WH and SA acknowledge funding from the European Union's 7th Framework Programme (Health) via Project Radiant.

*The funders had no role in study design, data collection and analysis, decision to publish, or preparation of the manuscript.*

**Copyright:** © 2016 Love MI *et al.* This is an open access article distributed under the terms of the [Creative Commons Attribution License](#), which permits unrestricted use, distribution, and reproduction in any medium, provided the original work is properly cited.

**How to cite this article:** Love MI, Anders S, Kim V and Huber W. **RNA-Seq workflow: gene-level exploratory analysis and differential expression [version 2; peer review: 2 approved]** F1000Research 2016, 4:1070 <https://doi.org/10.12688/f1000research.7035.2>

**First published:** 14 Oct 2015, 4:1070 <https://doi.org/10.12688/f1000research.7035.1>

**REVISED Amendments from Version 1**

We have updated the workflow in response to the comments from the referees, in particular, making the following major changes:

- Adding a note about the new import pipeline using the Bioconductor package `tximport`.
- Rewriting the explanation of principal components analysis (PCA)
- Explaining in brief the statistical routines performed by the `DESeq` function, and how it is possible to provide alternative estimates of internal parameters to the ones computed by `DESeq2`.
- Explaining that p-values and adjusted p-values rely on the correct model specification.
- Introducing the more general multiple test correction framework of Independent Hypothesis Weighting, now available for use with `DESeq2`.
- Explaining in brief the meaning of the likelihood ratio test in the time course experiment section.

**See referee reports**

## Introduction

Bioconductor has many packages which support analysis of high-throughput sequence data, including RNA sequencing (RNA-seq). The packages which we will cover in this workflow include core packages maintained by the Bioconductor core team for importing and processing raw sequencing data and loading gene annotations. We will also cover contributed packages for statistical analysis and visualization of sequencing data. Through scheduled releases every 6 months, the Bioconductor project ensures that all the packages within a release will work together in harmony (hence the “conductor” metaphor).

The packages used in this workflow are loaded with the `library` function and can be installed by following the [Bioconductor package installation instructions](#). A list of all the packages loaded in this workflow is included at the end, in the [Session information](#) section.

A live version of this workflow, which is kept current to the latest version of Bioconductor, is available at the [Bioconductor RNA-seq workflow](#) page. The workflow can be downloaded by following the `rnaseqGene` package links at the top of that page, which also includes information for installing the workflow along with all its package dependencies. If you want to execute the code shown here, please refer to the most up-to-date Bioconductor workflow package.

**Note:** If you have questions about this workflow, `DESeq2`, or any Bioconductor software, always post these to the [Bioconductor support site](#). If the questions concern a specific package, you can tag the post with the name of the package, or for general questions about the workflow, tag the post with `rnaseqGene`. Note the [posting guide](#) for crafting an optimal question for the support site.

## Experimental data

The data used in this workflow is stored in the `airway` package that summarizes an RNA-seq experiment wherein airway smooth muscle cells were treated with dexamethasone, a synthetic glucocorticoid steroid with anti-inflammatory effects<sup>1</sup>. Glucocorticoids are used, for example, in asthma patients to reduce inflammation of the airways. In the experiment, airway smooth muscle cells from four human donors were treated with 1 micromolar dexamethasone for 18 hours. For each of the four cell lines, we have a treated and an untreated sample. For more description of the experiment see the [PubMed entry 24926665](#) and for raw data see the [GEO entry GSE52778](#).

## Preparing count matrices

As input, the count-based statistical methods, such as `DESeq2`<sup>2</sup>, `edgeR`<sup>3</sup>, `limma` with the voom method<sup>4</sup>, `DSS`<sup>5</sup>, `EBSeq`<sup>6</sup> and `BaySeq`<sup>7</sup>, expect input data as obtained, e.g., from RNA-seq or another high-throughput sequencing experiment, in the form of a matrix of integer values. The value in the  $i$ -th row and the  $j$ -th column of the matrix tells how many reads (or fragments, for paired-end RNA-seq) can be assigned to gene  $i$  in sample  $j$ . Analogously, for other types of assays, the rows of the matrix might correspond e.g., to binding regions (with ChIP-Seq), species of bacteria (with metagenomic datasets), or peptide sequences (with quantitative mass spectrometry).

The values in the matrix should be raw counts of sequencing reads/fragments. This is important for *DESeq2*'s statistical model to hold, as only counts allow assessing the measurement precision correctly. It is important to *never* provide counts that were pre-normalized for sequencing depth/library size, as the statistical model is most powerful when applied to un-normalized counts, and is designed to account for library size differences internally.

### Transcript abundances and the *tximport* pipeline

Before we demonstrate how to align and then count RNA-seq fragments, we mention that a newer and faster alternative pipeline is to use transcript abundance quantification methods such as *Sailfish*<sup>8</sup>, *Salmon*<sup>9</sup>, *kallisto*<sup>10</sup> or *RSEM*<sup>11</sup> to estimate abundances without aligning reads, followed by the *tximport* package for assembling count and offset matrices for use with Bioconductor differential gene expression packages. We have added this as part of the revision process for this workflow, therefore the following material covers generation of count matrices through alignment and read/ fragment counting. The advantages of using the transcript abundance quantifiers in conjunction with *tximport* to produce gene-level count matrices and normalizing offsets are: this approach corrects for any potential changes in gene length across samples (e.g., from differential isoform usage)<sup>12</sup>; some of these methods are substantially faster and require less memory and disk usage compared to alignment-based methods; and it is possible to avoid discarding those fragments that can align to multiple genes with homologous sequence<sup>13</sup>. Note that transcript abundance quantifiers skip the generation of large files which store read alignments, instead producing smaller files which store estimated abundances, counts, and effective lengths per transcript. For more details, see the manuscript describing the *tximport* approach<sup>14</sup> and the *tximport* package vignette for software details. The entry point back into this workflow after using a transcript quantifier and *tximport* would be the [section on the data object](#) below.

### Aligning reads to a reference genome

The computational analysis of an RNA-seq experiment begins with a set of FASTQ files that contain the nucleotide sequence of each read and a quality score at each position. These reads must either be aligned to a reference genome or transcriptome, or the abundances and estimated counts per transcript can be estimated without alignment, as described above. In either case, it is important to know if the sequencing experiment was single-end or paired-end, as the alignment software will require the user to specify both FASTQ files for a paired-end experiment. The output of this alignment step is commonly stored in a file format called **SAM/BAM**.

A number of software programs exist to align reads to a reference genome, and the development is too rapid for this document to provide an up-to-date list. We recommend consulting benchmarking papers that discuss the advantages and disadvantages of each software, which include accuracy, sensitivity in aligning reads over splice junctions, speed, memory footprint, and many other features.

The reads for this experiment were aligned to the Ensembl release 75<sup>15</sup> human reference genome using the **STAR read aligner**<sup>16</sup>. In this example, we have a file in the current directory called `files` with each line containing an identifier for each experiment, and we have all the FASTQ files in a subdirectory `fastq`. If you have downloaded the FASTQ files from the Sequence Read Archive, the identifiers would be SRA run IDs, e.g. SRR1039520. You should have two files for a paired-end experiment for each ID, `fastq/SRR1039520_1.fastq` and `fastq/SRR1039520_2.fastq`, which give the first and second read for the paired-end fragments. If you have performed a single-end experiment, you would only have one file per ID. The FASTQ files that were aligned for this article were downloaded from the European Nucleotide Archive, and can be found by searching the project ID: **SRP033351**. We have also created a subdirectory, `aligned`, where STAR will output its alignment files.

```
for f in `cat files`; do STAR --genomeDir ../STAR/ENSEMBL.homo_sapiens.release-75 \
--readFilesIn fastq/$f\1.fastq fastq/$f\2.fastq \
--runThreadN 12 --outFileNamePrefix aligned/$f.; done
```

**SAMtools**<sup>17</sup> was used to generate BAM files. The `-@` flag can be used to allocate additional threads.

```
for f in `cat files`; do samtools view -bS aligned/$f.Aligned.out.sam \
-o aligned/$f.bam; done
```

The BAM files for a number of sequencing runs can then be used to generate count matrices, as described in the following section.

## Locating alignment files

Besides the count matrix that we will use later, the *airway* package also contains eight files with a small subset of the total number of reads in the experiment. The reads were selected which aligned to a small region of chromosome 1. We chose a subset of reads because the full alignment files are large (a few gigabytes each), and because it takes between 10–30 minutes to count the fragments for each sample. We also include a small subset of a GTF (gene transfer format) annotation file that has information about the genes contained in this small region. We will discuss this file in more depth below. We will use these files to demonstrate how a count matrix can be constructed from BAM files. Afterwards, we will load the full count matrix corresponding to all samples and all data, which is already provided in the same package, and will continue the analysis with that full matrix.

We load the data package with the example data:

```
library("airway")
```

The R function *system.file* can be used to find out where on your computer the files from a package have been installed. Here we ask for the full path to the *extdata* directory, where R packages store external data, that is part of the *airway* package.

```
dir <- system.file("extdata", package="airway", mustWork=TRUE)
```

In this directory, we find the eight BAM files (and some other files):

```
list.files(dir)

## [1] "GSE52778_series_matrix.txt"      "Homo_sapiens.GRCh37.75_subset.gtf"
## [3] "sample_table.csv"               "SraRunInfo_SRP033351.csv"
## [5] "SRR1039508_subset.bam"         "SRR1039508_subset.bam.bai"
## [7] "SRR1039509_subset.bam"         "SRR1039512_subset.bam"
## [9] "SRR1039513_subset.bam"         "SRR1039516_subset.bam"
## [11] "SRR1039517_subset.bam"         "SRR1039520_subset.bam"
## [13] "SRR1039521_subset.bam"
```

Typically, we have a table with detailed information for each of our samples that links samples to the associated FASTQ and BAM files. For your own project, you might create such a comma-separated value (CSV) file using a text editor or spreadsheet software such as Excel.

We load such a CSV file with *read.csv*:

```
csvfile <- file.path(dir, "sample_table.csv")
(sampleTable <- read.csv(csvfile, row.names=1))

##      SampleName    cell    dex albut      Run avgLength Experiment   Sample   BioSample
## SRR1039508 GSM1275862 N61311 untrt untrt SRR1039508      126 SRX384345 SRS508568 SAMN02422669
## SRR1039509 GSM1275863 N61311 trt untrt SRR1039509      126 SRX384346 SRS508567 SAMN02422675
## SRR1039512 GSM1275866 N052611 untrt untrt SRR1039512      126 SRX384349 SRS508571 SAMN02422678
## SRR1039513 GSM1275867 N052611 trt untrt SRR1039513       87 SRX384350 SRS508572 SAMN02422670
## SRR1039516 GSM1275870 N080611 untrt untrt SRR1039516      120 SRX384353 SRS508575 SAMN02422682
## SRR1039517 GSM1275871 N080611 trt untrt SRR1039517      126 SRX384354 SRS508576 SAMN02422673
## SRR1039520 GSM1275874 N061011 untrt untrt SRR1039520      101 SRX384357 SRS508579 SAMN02422683
## SRR1039521 GSM1275875 N061011 trt untrt SRR1039521       98 SRX384358 SRS508580 SAMN02422677
```

**Note:** here and elsewhere in the workflow, the parentheses ( ) around the entire code of the last line above is an R trick to print the output of the function in addition to saving it to *sampleTable*. This is equivalent to assigning and then showing the object in two steps:

```
sampleTable <- read.csv(csvfile, row.names=1)
sampleTable
```

Once the reads have been aligned, there are a number of tools that can be used to count the number of reads/fragments that can be uniquely assigned to genomic features for each sample. These often take as input SAM/BAM alignment files and a file specifying the genomic features, e.g. a GFF3 or GTF file specifying the gene models.

The following tools can be used generate count matrices: *summarizeOverlaps*<sup>18</sup>, *featureCounts*<sup>19</sup>, or *htseq-count*<sup>20</sup> (Table 1).

We now proceed using the *summarizeOverlaps* method of counting. Using the Run column in the sample table, we construct the full paths to the files we want to perform the counting operation on:

```
filenames <- file.path(dir, paste0(sampleTable$Run, "_subset.bam"))
file.exists(filenames)

## [1] TRUE TRUE TRUE TRUE TRUE TRUE TRUE TRUE
```

We indicate in Bioconductor that these files are BAM files using the *BamFileList* function from the *Rsamtools* package that provides an R interface to BAM files. Here we also specify details about how the BAM files should be treated, e.g., only process 2 million reads at a time. See *?BamFileList* for more information.

```
library("Rsamtools")
bamfiles <- BamFileList(filenames, yieldSize=2000000)
```

**Note:** make sure that the chromosome names of the genomic features in the annotation you use are consistent with the chromosome names of the reference used for read alignment. Otherwise, the scripts might fail to count any reads to features due to the mismatching names. For example, a common mistake is when the alignment files contain chromosome names in the style of 1 and the gene annotation in the style of chr1, or the other way around. See the *seqlevelsStyle* function in the *GenomeInfoDb* package for solutions. We can check the chromosome names (here called "seqnames") in the alignment files like so:

```
seqinfo(bamfiles[1])

## Seqinfo object with 84 sequences from an unspecified genome:
##   seqnames      seqlengths isCircular genome
##   1            249250621      <NA>      <NA>
##  10            135534747      <NA>      <NA>
##  11            135006516      <NA>      <NA>
##  12            133851895      <NA>      <NA>
##  13            115169878      <NA>      <NA>
##   ...            ...          ...      ...
## GL000210.1       27682        <NA>      <NA>
## GL000231.1       27386        <NA>      <NA>
## GL000229.1       19913        <NA>      <NA>
## GL000226.1       15008        <NA>      <NA>
## GL000207.1        4262        <NA>      <NA>
```

### Defining gene models

Next, we need to read in the gene model that will be used for counting reads/fragments. We will read the gene model from an Ensembl *GTF file*<sup>15</sup>, using *makeTxDbFromGFF* from the *GenomicFeatures* package. GTF files can be downloaded from Ensembl's *FTP site* or other gene model repositories. A *TxDb* object is a database that can be used to generate a variety of range-based objects, such as exons, transcripts, and genes. We want to make a list of exons grouped by gene for counting read/fragments.

**Table 1.** Various software which can be used to prepare RNA-seq count matrices.

function	package	framework	output	DESeq2 input function
<i>summarizeOverlaps</i>	<i>GenomicAlignments</i>	R/Bioc.	<i>SummarizedExp.</i>	<i>DESeqDataSet</i>
<i>featureCounts</i>	<i>Rsubread</i>	R/Bioc.	matrix	<i>DESeqDataSetFromMatrix</i>
<i>tximport</i>	<i>tximport</i>	R/Bioc.	list of matrices	<i>DESeqDataSetFromTximport</i>
<i>htseq-count</i>	<i>HTSeq</i>	Python	files	<i>DESeqDataSetFromHTSeq</i>

There are other options for constructing a *TxDb*. For the *known genes* track from the UCSC Genome Browser<sup>21</sup>, one can use the pre-built Transcript DataBase: *TxDb.Hsapiens.UCSC.hg19.knownGene*. If the annotation file is accessible from *AnnotationHub* (as is the case for the Ensembl genes), a pre-scanned GTF file can be imported using *makeTxDbFromGRanges*. Finally, the *makeTxDbFromBiomart* function can be used to automatically pull a gene model from Biomart using *biomaRt*<sup>22</sup>.

Here we will demonstrate loading from a GTF file:

```
library("GenomicFeatures")
```

We indicate that none of our sequences (chromosomes) are circular using a 0-length character vector.

```
gtffile <- file.path(dir, "Homo_sapiens.GRCh37.75_subset.gtf")
(txdb <- makeTxDbFromGFF(gtffile, format="gtf", circ_seqs=character()))

## TxDb object:
## # Db type: TxDb
## # Supporting package: GenomicFeatures
## # Data source: /Users/michael/Library/R/3.2/library/airway/extdata/Homo_sapiens.GRCh37.75_subset.gtf
## # Organism: NA
## # miRBase build ID: NA
## # Genome: NA
## # transcript_nrow: 65
## # exon_nrow: 279
## # cds_nrow: 158
## # Db created by: GenomicFeatures package from Bioconductor
## # Creation time: 2015-09-09 14:48:56 -0400 (Wed, 09 Sep 2015)
## # GenomicFeatures version at creation time: 1.20.3
## # RSQLite version at creation time: 1.0.0
## # DBSCHEMAVERSION: 1.1
```

The following line produces a *GRangesList* of all the exons grouped by gene<sup>18</sup>. Each element of the list is a *GRanges* object of the exons for a gene.

```
(ebg <- exonsBy(txdb, by="gene"))

## GRangesList object of length 20:
## $ENSG00000009724
## GRanges object with 18 ranges and 2 metadata columns:
##      seqnames      ranges      strand | exon_id      exon_name
##      <Rle>         <IRanges>  <Rle> | <integer>    <character>
##      [1]          1 [11086580, 11087705] - |          98 ENSE00000818830
##      [2]          1 [11090233, 11090307] - |          99 ENSE00000472123
##      [3]          1 [11090805, 11090939] - |         100 ENSE00000743084
##      [4]          1 [11094885, 11094963] - |         101 ENSE00000743085
##      [5]          1 [11097750, 11097868] - |         103 ENSE00003520086
##      ...          ...                ... | ...          ...
##      [14]         1 [11106948, 11107176] - |         111 ENSE00003467404
##      [15]         1 [11106948, 11107176] - |         112 ENSE00003489217
##      [16]         1 [11107260, 11107280] - |         113 ENSE00001833377
##      [17]         1 [11107260, 11107284] - |         114 ENSE00001472289
##      [18]         1 [11107260, 11107290] - |         115 ENSE00001881401
##
## ...
## <19 more elements>
## -----
## seqinfo: 1 sequence from an unspecified genome; no seqlengths
```

### Read counting step

After these preparations, the actual counting is easy. The function *summarizeOverlaps* from the *GenomicAlignments* package will do this. This produces a *SummarizedExperiment* object that contains a variety of information about the experiment, and will be described in more detail below.

**Note:** If it is desired to perform counting using multiple cores, one can use the *register* and *MulticoreParam* or *SnowParam* functions from the *BiocParallel* package before the counting call below. Expect that the *summarizeOverlaps* call will take at least 30 minutes per file for a human RNA-seq file with 30 million aligned reads. By sending the files to separate cores, one can speed up the entire counting process.

```
library("GenomicAlignments")
library("BiocParallel")
```

Here we specify to use one core, not multiple cores. We could have also skipped this line and the counting step would run in serial.

```
register(SerialParam())
```

The following call creates the *SummarizedExperiment* object with counts:

```
se <- summarizeOverlaps(features=ebg, reads=bamfiles,
                        mode="Union",
                        singleEnd=FALSE,
                        ignore.strand=TRUE,
                        fragments=TRUE )
```

We specify a number of arguments besides the *features* and the *reads*. The *mode* argument describes what kind of read overlaps will be counted. These modes are shown in a diagram of the *Counting reads with summarizeOverlaps* vignette for the *GenomicAlignments* package. Note that fragments will be counted only once to each gene, even if they overlap multiple exons of a gene which may themselves be overlapping. Setting *singleEnd* to *FALSE* indicates that the experiment produced paired-end reads, and we want to count a pair of reads (a fragment) only once toward the count for a gene.

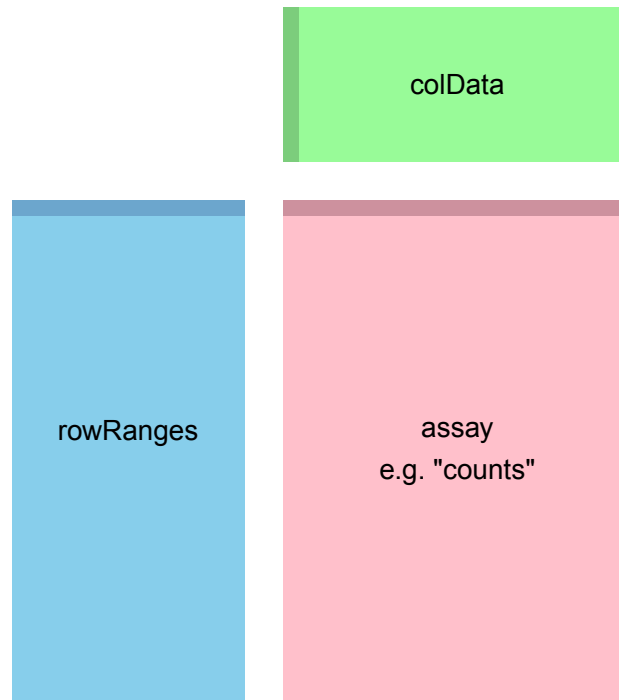
In order to produce correct counts, it is important to know if the RNA-seq experiment was strand-specific or not. This experiment was not strand-specific so we set *ignore.strand* to *TRUE*. The *fragments* argument can be used when *singleEnd=FALSE* to specify if unpaired reads should be counted (yes if *fragments=TRUE*).

### SummarizedExperiment

The *SummarizedExperiment* container is diagrammed in [Figure 1](#) and discussed in the latest Bioconductor paper<sup>23</sup>. In our case we have created a single matrix named “counts” that contains the fragment counts for each gene and sample, which is stored in *assay*. It is also possible to store multiple matrices, accessed with *assays*. The *rowRanges* for our object is the *GRangesList* we used for counting (one *GRanges* of exons for each row of the count matrix). The component parts of the *SummarizedExperiment* are accessed with an R function of the same name: *assay* (or *assays*), *rowRanges* and *colData*.

This example code above actually only counted a small subset of fragments from the original experiment. Nevertheless, we can still investigate the resulting *SummarizedExperiment* by looking at the counts in the *assay* slot, the phenotypic data about the samples in *colData* slot (in this case an empty *DataFrame*), and the data about the genes in the *rowRanges* slot.





**Figure 1.** The component parts of a *SummarizedExperiment* object. The *assay* (pink block) contains the matrix of counts, the *rowRanges* (blue block) contains information about the genomic ranges and the *colData* (green block) contains information about the samples. The highlighted line in each block represents the first row (note that the first row of *colData* lines up with the first column of the *assay*).

```
se
## class: SummarizedExperiment
## dim: 20 8
## exptData(0):
## assays(1): counts
## rownames(20): ENSG00000009724 ENSG00000116649 ... ENSG00000271794 ENSG00000271895
## rowRanges metadata column names(0):
## colnames(8): SRR1039508_subset.bam SRR1039509_subset.bam ... SRR1039520_subset.bam
## SRR1039521_subset.bam
## colData names(0):

dim(se)

## [1] 20 8

assayNames(se)

## [1] "counts"

head(assay(se), 3)

##           SRR1039508_subset.bam SRR1039509_subset.bam SRR1039512_subset.bam
## ENSG00000009724                38                28                66
## ENSG00000116649               1004               1255               1122
## ENSG00000120942                218                256                233
##           SRR1039513_subset.bam SRR1039516_subset.bam SRR1039517_subset.bam
## ENSG00000009724                24                 42                 41
## ENSG00000116649               1313               1100               1879
## ENSG00000120942                252                269                465
```

```
##          SRR1039520_subset.bam SRR1039521_subset.bam
## ENSG000000009724              47              36
## ENSG000000116649              745             1536
## ENSG000000120942              207             400
```

```
colSums(assay(se))
```

```
## SRR1039508_subset.bam SRR1039509_subset.bam SRR1039512_subset.bam SRR1039513_subset.bam
##          6478              6501              7699              6801
## SRR1039516_subset.bam SRR1039517_subset.bam SRR1039520_subset.bam SRR1039521_subset.bam
##          8009              10849             5254              9168
```

The rowRanges, when printed, only shows the first *GRanges*, and tells us there are 19 more elements:

```
rowRanges(se)
```

```
## GRangesList object of length 20:
## $ENSG000000009724
## GRanges object with 18 ranges and 2 metadata columns:
##      seqnames      ranges strand | exon_id      exon_name
##      <Rle>        <IRanges> <Rle> | <integer>    <character>
## [1]      1 [11086580, 11087705] - |      98 ENSE00000818830
## [2]      1 [11090233, 11090307] - |      99 ENSE00000472123
## [3]      1 [11090805, 11090939] - |     100 ENSE00000743084
## [4]      1 [11094885, 11094963] - |     101 ENSE00000743085
## [5]      1 [11097750, 11097868] - |     103 ENSE00003520086
## ...      ...      ...      ... | ...      ...
## [14]     1 [11106948, 11107176] - |     111 ENSE00003467404
## [15]     1 [11106948, 11107176] - |     112 ENSE00003489217
## [16]     1 [11107260, 11107280] - |     113 ENSE00001833377
## [17]     1 [11107260, 11107284] - |     114 ENSE00001472289
## [18]     1 [11107260, 11107290] - |     115 ENSE00001881401
##
## ...
## <19 more elements>
## -----
## seqinfo: 1 sequence from an unspecified genome; no seqlengths
```

The rowRanges also contains metadata about the construction of the gene model in the metadata slot. Here we use a helpful R function, `str`, to display the metadata compactly:

```
str(metadata(rowRanges(se)))
```

```
## List of 1
## $ genomeInfo:List of 14
## ..$ Db type : chr "TxDb"
## ..$ Supporting package : chr "GenomicFeatures"
## ..$ Data source : chr "/Users/michael/Library/R/3.2/
library/airway/extdata
## ..$ Organism : chr NA
## ..$ miRBase build ID : chr NA
## ..$ Genome : chr NA
## ..$ transcript_nrow : chr "65"
## ..$ exon_nrow : chr "279"
## ..$ cds_nrow : chr "158"
## ..$ Db created by : chr "GenomicFeatures package from
Bioconductor"
## ..$ Creation time : chr "2015-09-09 14:48:56 -0400
(Wed, 09 Sep 2015)"
```

```
## ..$ GenomicFeatures version at creation time: chr "1.20.3"
## ..$ RSQLite version at creation time          : chr "1.0.0"
## ..$ DBSCHEMAVERSION                          : chr "1.1"
```

The colData:

```
colData(se)
```

```
## DataFrame with 8 rows and 0 columns
```

The colData slot, so far empty, should contain all the metadata. Because we used a column of sampleTable to produce the bamfiles vector, we know the columns of se are in the same order as the rows of sampleTable. We can assign the sampleTable as the colData of the summarized experiment, by converting it into a *DataFrame* and using the assignment function:

```
(colData(se) <- DataFrame(sampleTable))
```

```
## DataFrame with 8 rows and 9 columns
##           SampleName      cell      dex      albut      Run avgLength      Experiment      Sample
##           <factor> <factor> <factor> <factor>      <factor> <integer>      <factor> <factor>
## SRR1039508 GSM1275862 N61311      untrt      untrt      SRR1039508      126      SRX384345      SRS508568
## SRR1039509 GSM1275863 N61311      trt       untrt      SRR1039509      126      SRX384346      SRS508567
## SRR1039512 GSM1275866 N052611     untrt      untrt      SRR1039512      126      SRX384349      SRS508571
## SRR1039513 GSM1275867 N052611     trt       untrt      SRR1039513      87       SRX384350      SRS508572
## SRR1039516 GSM1275870 N080611     untrt      untrt      SRR1039516      120      SRX384353      SRS508575
## SRR1039517 GSM1275871 N080611     trt       untrt      SRR1039517      126      SRX384354      SRS508576
## SRR1039520 GSM1275874 N061011     untrt      untrt      SRR1039520      101      SRX384357      SRS508579
## SRR1039521 GSM1275875 N061011     trt       untrt      SRR1039521      98       SRX384358      SRS508580
##           BioSample
##           <factor>
## SRR1039508 SAMN02422669
## SRR1039509 SAMN02422675
## SRR1039512 SAMN02422678
## SRR1039513 SAMN02422670
## SRR1039516 SAMN02422682
## SRR1039517 SAMN02422673
## SRR1039520 SAMN02422683
## SRR1039521 SAMN02422677
```

If however the user did not use sampleTable to generate the count matrix, at this point it would be critical to compare the row names of sampleTable to the column names of the count matrix or *SummarizedExperiment*, to make sure these are identical. The *all.equal* function can be used to make such a comparison.

### Branching point

At this point, we have counted the fragments which overlap the genes in the gene model we specified. This is a branching point where we could use a variety of Bioconductor packages for exploration and differential expression of the count data, including *edgeR*<sup>3</sup>, *limma* with the voom method<sup>4</sup>, *DSS*<sup>5</sup>, *EBSeq*<sup>6</sup> and *BaySeq*<sup>7</sup>. We will continue, using *DESeq2*<sup>2</sup>. The *SummarizedExperiment* object is all we need to start our analysis. In the following section we will show how to use it to create the data object used by *DESeq2*.

### The DESeqDataSet, sample information, and the design formula

Bioconductor software packages often define and use a custom class for storing data that makes sure that all the needed data slots are consistently provided and fulfill the requirements. In addition, Bioconductor has general data classes (such as the *SummarizedExperiment*) that can be used to move data between packages. Additionally, the core Bioconductor classes provide useful functionality: for example, subsetting or reordering the rows or columns of a *SummarizedExperiment* automatically subsets or reorders the associated *rowRanges* and *colData*, which can help to prevent accidental sample swaps that would otherwise lead to spurious results. With *SummarizedExperiment* this is all taken care of behind the scenes.

In *DESeq2*, the custom class is called *DESeqDataSet*. It is built on top of the *SummarizedExperiment* class, and it is easy to convert *SummarizedExperiment* objects into *DESeqDataSet* objects, which we show below. One of the two main differences is that the `assay` slot is instead accessed using the `counts` accessor function, and the *DESeqDataSet* class enforces that the values in this matrix are non-negative integers.

A second difference is that the *DESeqDataSet* has an associated *design formula*. The experimental design is specified at the beginning of the analysis, as it will inform many of the *DESeq2* functions how to treat the samples in the analysis (one exception is the size factor estimation, i.e., the adjustment for differing library sizes, which does not depend on the design formula). The design formula tells which columns in the sample information table (`colData`) specify the experimental design and how these factors should be used in the analysis.

The simplest design formula for differential expression would be `~ condition`, where `condition` is a column in the `colData` that specifies which of two (or more groups) the samples belong to. For the airway experiment, we will specify `~ cell + dex` meaning that we want to test for the effect of dexamethasone (`dex`) controlling for the effect of different donors' cells (`cell`). We can see each of the columns just using the `$` directly on the *SummarizedExperiment* or *DESeqDataSet*:

```
se$cell
## [1] N61311 N61311 N052611 N052611 N080611 N080611 N061011 N061011
## Levels: N052611 N061011 N080611 N61311

se$dex
## [1] untrt trt untrt trt untrt trt untrt trt
## Levels: trt untrt
```

**Note:** it is preferred in R that the first level of a factor be the reference level (e.g. control, or untreated samples), so we can *relevel* the `dex` factor like so:

```
se$dex <- relevel(se$dex, "untrt")
se$dex
## [1] untrt trt untrt trt untrt trt untrt trt
## Levels: untrt trt
```

For running *DESeq2* models, you can use R's formula notation to express any fixed-effects experimental design. Note that *DESeq2* uses the same formula notation as, for instance, the `lm` function of base R. If the research aim is to determine for which genes the effect of treatment is different across groups, then interaction terms can be included and tested using a design such as `~ group + treatment + group:treatment`. See the manual page for `?results` for more examples. We will show how to use an interaction term to test for condition-specific changes over time in a time course example below.

In the following sections, we will demonstrate the construction of the *DESeqDataSet* from two starting points:

- from a *SummarizedExperiment* object
- from a count matrix and a sample information table

For a full example of using the *HTSeq* Python package for read counting, please see the *pasilla* vignette. For an example of generating the *DESeqDataSet* from files produced by *htseq-count*, please see the *DESeq2* vignette.

### Starting from *SummarizedExperiment*

We now use R's `data` command to load a prepared *SummarizedExperiment* that was generated from the publicly available sequencing data files associated with the Himes *et al.* paper, described above. The steps we used to produce this object were equivalent to those you worked through in the previous sections, except that we used all the reads and all the genes. For more details on the exact steps used to create this object, type `vignette("airway")` into your R session.

```
data("airway")
se <- airway
```

Again, we want to specify that `untrt` is the reference level for the `dex` variable:

```
se$dex <- relevel(se$dex, "untrt")
se$dex

## [1] untrt trt   untrt trt   untrt trt   untrt trt
## Levels: untrt trt
```

We can quickly check the millions of fragments that uniquely aligned to the genes (the second argument of `round` tells how many decimal points to keep).

```
round( colSums(assay(se)) / 1e6, 1 )

## SRR1039508 SRR1039509 SRR1039512 SRR1039513 SRR1039516 SRR1039517 SRR1039520 SRR1039521
##          20.6          18.8          25.3          15.2          24.4          30.8          19.1          21.2
```

Supposing we have constructed a *SummarizedExperiment* using one of the methods described in the previous section, we now need to make sure that the object contains all the necessary information about the samples, i.e., a table with metadata on the count matrix's columns stored in the `colData` slot:

```
colData(se)

## DataFrame with 8 rows and 9 columns
##      SampleName  cell      dex      albut      Run avgLength Experiment  Sample
##      <factor> <factor> <factor> <factor> <factor> <integer> <factor> <factor>
## SRR1039508 GSM1275862 N61311   untrt   untrt SRR1039508      126 SRX384345 SRS508568
## SRR1039509 GSM1275863 N61311   trt     untrt SRR1039509      126 SRX384346 SRS508567
## SRR1039512 GSM1275866 N052611  untrt   untrt SRR1039512      126 SRX384349 SRS508571
## SRR1039513 GSM1275867 N052611  trt     untrt SRR1039513      87 SRX384350 SRS508572
## SRR1039516 GSM1275870 N080611  untrt   untrt SRR1039516      120 SRX384353 SRS508575
## SRR1039517 GSM1275871 N080611  trt     untrt SRR1039517      126 SRX384354 SRS508576
## SRR1039520 GSM1275874 N061011  untrt   untrt SRR1039520      101 SRX384357 SRS508579
## SRR1039521 GSM1275875 N061011  trt     untrt SRR1039521      98 SRX384358 SRS508580
##      BioSample
##      <factor>
## SRR1039508 SAMN02422669
## SRR1039509 SAMN02422675
## SRR1039512 SAMN02422678
## SRR1039513 SAMN02422670
## SRR1039516 SAMN02422682
## SRR1039517 SAMN02422673
## SRR1039520 SAMN02422683
## SRR1039521 SAMN02422677
```

Here we see that this object already contains an informative `colData` slot – because we have already prepared it for you, as described in the *airway* vignette. However, when you work with your own data, you will have to add the pertinent sample/phenotypic information for the experiment at this stage. We highly recommend keeping this information in a comma-separated value (CSV) or tab-separated value (TSV) file, which can be exported from an Excel spreadsheet, and then assign this to the `colData` slot, making sure that the rows correspond to the columns of the *SummarizedExperiment*. We made sure of this correspondence earlier by specifying the BAM files using a column of the sample table.

Once we have our fully annotated *SummarizedExperiment* object, we can construct a *DESeqDataSet* object from it that will then form the starting point of the analysis. We add an appropriate design for the analysis:

```
library("DESeq2")
dds <- DESeqDataSet(se, design = ~ cell + dex)
```

If we only wanted to perform transformations and exploratory data analysis (as explained later in this workflow) we could use a  $\sim 1$  for the design, but we would need to remember to substitute a real design, e.g.  $\sim \text{condition}$ , before we run *DESeq* for differential testing or else we would only be testing the intercept.

### Starting from count matrices

In this section, we will show how to build an *DESeqDataSet* supposing we only have a count matrix and a table of sample information.

**Note:** if you have prepared a *SummarizedExperiment* you should skip this section. While the previous section would be used to construct a *DESeqDataSet* from a *SummarizedExperiment*, here we first extract the individual object (count matrix and sample info) from the *SummarizedExperiment* in order to build it back up into a new object – only for demonstration purposes. In practice, the count matrix would either be read in from a file or perhaps generated by an R function like *featureCounts* from the *Rsubread* package<sup>19</sup>.

The information in a *SummarizedExperiment* object can be accessed with accessor functions. For example, to see the actual data, i.e., here, the fragment counts, we use the *assay* function. (The *head* function restricts the output to the first few lines.)

```
countdata <- assay(se)
head(countdata, 3)
```

	SRR1039508	SRR1039509	SRR1039512	SRR1039513	SRR1039516	SRR1039517	SRR1039520
## ENSG00000000003	679	448	873	408	1138	1047	770
## ENSG00000000005	0	0	0	0	0	0	0
## ENSG000000000419	467	515	621	365	587	799	417

```
##
## SRR1039521
## ENSG00000000003 572
## ENSG00000000005 0
## ENSG000000000419 508
```

In this count matrix, each row represents an Ensembl gene, each column a sequenced RNA library, and the values give the raw numbers of fragments that were uniquely assigned to the respective gene in each library. We also have information on each of the samples (the columns of the count matrix). If you've counted reads with some other software, it is very important to check that the columns of the count matrix correspond to the rows of the sample information table.

```
coldata <- colData(se)
```

We now have all the ingredients to prepare our data object in a form that is suitable for analysis, namely:

- countdata: a table with the fragment counts
- coldata: a table with information about the samples

To now construct the *DESeqDataSet* object from the matrix of counts and the sample information table, we use:

```
(ddsMat <- DESeqDataSetFromMatrix(countData = countdata,
                                   colData = coldata,
                                   design = ~ cell + dex))

## class: DESeqDataSet
## dim: 64102 8
## exptData(0):
## assays(1): counts
## rownames(64102): ENSG00000000003 ENSG00000000005 ... LRG_98 LRG_99
## rowRanges metadata column names(0):
## colnames(8): SRR1039508 SRR1039509 ... SRR1039520 SRR1039521
## colData names(9): SampleName cell ... Sample BioSample
```

We will continue with the object generated from the *SummarizedExperiment* section.

## Exploratory analysis and visualization

There are two main steps in this workflow, which are useful to separate conceptually: the one we will see first involves *transformations of the counts* in order to visually explore sample relationships. In the second step, we will go back to the original raw counts for *statistical testing*. This is critical because the statistical testing methods rely on original count data (not scaled or transformed) for calculating the precision of measurements.

### Pre-filtering the dataset

Our count matrix with our *DESeqDataSet* contains many rows with only zeros, and additionally many rows with only a few fragments total. In order to reduce the size of the object, and to increase the speed of our functions, we can remove the rows that have no or nearly no information about the amount of gene expression. Here we remove rows of the *DESeqDataSet* that have no counts, or only a single count across all samples:

```
nrow(dds)

## [1] 64102

dds <- dds[ rowSums(counts(dds)) > 1, ]
nrow(dds)

## [1] 29391
```

### The rlog transformation

Many common statistical methods for exploratory analysis of multidimensional data, for example clustering and *principal components analysis* (PCA), work best for data that generally has the same range of variance at different ranges of the mean values. When the expected amount of variance is approximately the same across different mean values, the data is said to be *homoskedastic*. For RNA-seq raw counts, however, the variance grows with the mean. For example, if one performs PCA directly on a matrix of size-factor-normalized read counts, the result typically depends only on the few most strongly expressed genes because they show the largest absolute differences between samples. A simple and often used strategy to avoid this is to take the logarithm of the normalized count values plus a small pseudocount; however, now the genes with the very lowest counts will tend to dominate the results because, due to the strong Poisson noise inherent to small count values, and the fact that the logarithm amplifies differences for the smallest values, these low count genes will show the strongest relative differences between samples.

As a solution, *DESeq2* offers transformations for count data that stabilize the variance across the mean. One such transformation is the *regularized-logarithm transformation* or *rlog*<sup>2</sup>. For genes with high counts, the rlog transformation will give similar result to the ordinary log2 transformation of normalized counts. For genes with lower counts, however, the values are shrunk towards the genes' averages across all samples. Using an empirical Bayesian prior on inter-sample differences in the form of a *ridge penalty*, the rlog-transformed data then becomes approximately *homoskedastic*, and can be used directly for computing distances between samples and making PCA plots. Another transformation that similarly improves distance calculation across samples, the *variance stabilizing transformation*<sup>24</sup> implemented in the *vst* function, is discussed alongside the *rlog* in the *DESeq2* vignette.

**Note:** for datasets with larger sample size, the variance stabilizing transformation will be much faster to compute.

The two transformations (rlog and VST) are provided for applications *other* than differential testing. For differential testing we recommend the *DESeq* function applied to raw counts, as described later in this workflow, which also takes into account the dependence of the variance of counts on the mean value during the dispersion estimation step.

The function *rlog* returns a *SummarizedExperiment* object that contains the rlog-transformed values in its *assay* slot.

```
rld <- rlog(dds, blind=FALSE)
head(assay(rld), 3)

##           SRR1039508 SRR1039509 SRR1039512 SRR1039513 SRR1039516 SRR1039517 SRR1039520
## ENSG000000000003    9.385536    9.051592    9.517044    9.284930    9.839980    9.530510    9.663767
## ENSG000000000419    8.868967    9.138776    9.036191    9.075538    8.971927    9.132297    8.860846
## ENSG000000000457    7.962223    7.881317    7.823335    7.921887    7.750083    7.886432    7.957928
##           SRR1039521
## ENSG000000000003    9.277281
## ENSG000000000419    9.061085
## ENSG000000000457    7.912412
```

We specify `blind=FALSE`, which means that differences across donors and treatment should not add to the variance-mean profile of the experiment. However, the experimental design is not used directly in the transformation, only in estimating the global amount of variability in the counts. For a fully *unsupervised* transformation, one can set `blind=TRUE` (which is the default).

To show the effect of the transformation, in [Figure 2](#) we plot the first sample against the second, first simply using the `log2` function (after adding 1, to avoid taking the log of zero), and then using the rlog-transformed values. For the `log2` approach, we need to first estimate *size factors* to account for sequencing depth, and then specify `normalized=TRUE`. Sequencing depth correction is done automatically for the `rlog` method (and for *varianceStabilizingTransformation*).

```
par( mfrow = c( 1, 2 ) )
dds <- estimateSizeFactors(dds)
plot(log2(counts(dds, normalized=TRUE)[,1:2] + 1),
     pch=16, cex=0.3)
plot(assay(rld)[,1:2],
     pch=16, cex=0.3)
```

We can see how genes with low counts (bottom left-hand corner) seem to be excessively variable on the ordinary logarithmic scale, while the rlog transform compresses differences for the low count genes for which the data provide little information about differential expression.

### Sample distances

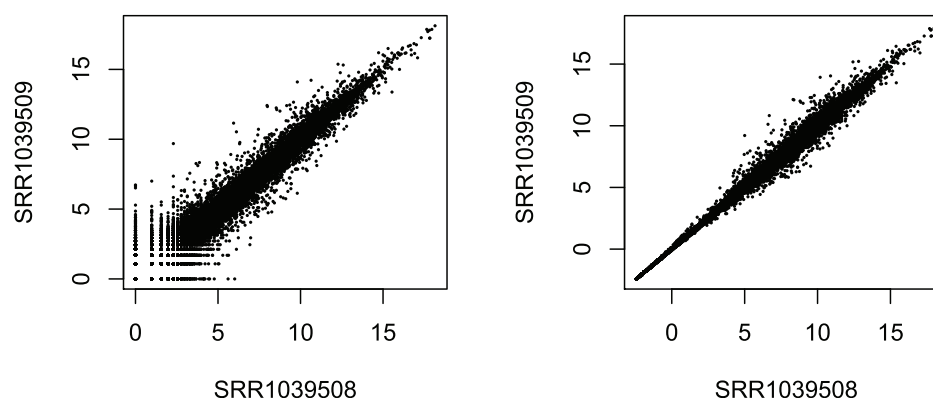
A useful first step in an RNA-seq analysis is often to assess overall similarity between samples: Which samples are similar to each other, which are different? Does this fit to the expectation from the experiment's design?

We use the R function `dist` to calculate the Euclidean distance between samples. To ensure we have a roughly equal contribution from all genes, we use it on the rlog-transformed data. We need to transpose the matrix of values using `t`, because the `dist` function expects the different samples to be rows of its argument, and different dimensions (here, genes) to be columns.

```
sampleDists <- dist( t( assay(rld) ) )
sampleDists
```

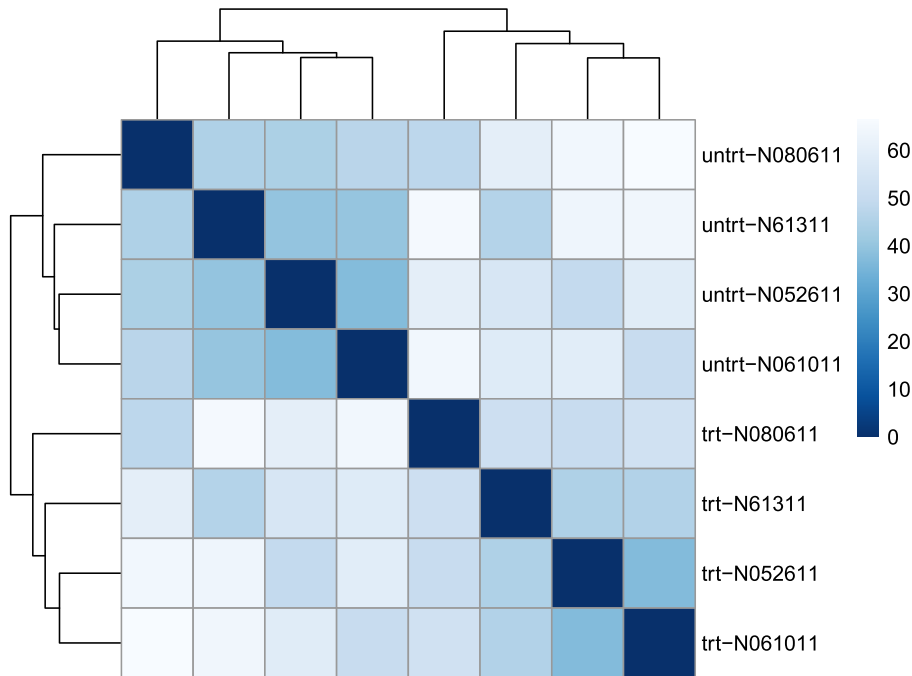
	SRR1039508	SRR1039509	SRR1039512	SRR1039513	SRR1039516	SRR1039517	SRR1039520
SRR1039509	46.25524						
SRR1039512	39.94490	55.67572					
SRR1039513	63.36642	45.19462	49.30007				
SRR1039516	45.28129	59.89304	44.32383	64.54450			
SRR1039517	65.34730	52.25475	60.05523	50.64861	48.05714		
SRR1039520	40.20215	58.19904	37.35413	59.19401	47.15396	64.44641	
SRR1039521	64.09339	45.70177	58.59277	37.10803	66.36711	53.09669	50.72310

We visualize the distances in a heatmap in [Figure 3](#), using the function `pheatmap` from the *pheatmap* package.



**Figure 2. Scatterplot of transformed counts from two samples.** Shown are scatterplots using the `log2` transform of normalized counts (left side) and using the rlog (right side).





**Figure 3.** Heatmap of sample-to-sample distances using the rlog-transformed values.

```
library("pheatmap")
library("RColorBrewer")
```

In order to plot the sample distance matrix with the rows/columns arranged by the distances in our distance matrix, we manually provide `sampleDists` to the `clustering_distance` argument of the `pheatmap` function. Otherwise the `pheatmap` function would assume that the matrix contains the data values themselves, and would calculate distances between the rows/columns of the distance matrix, which is not desired. We also manually specify a blue color palette using the `colorRampPalette` function from the *RColorBrewer*.

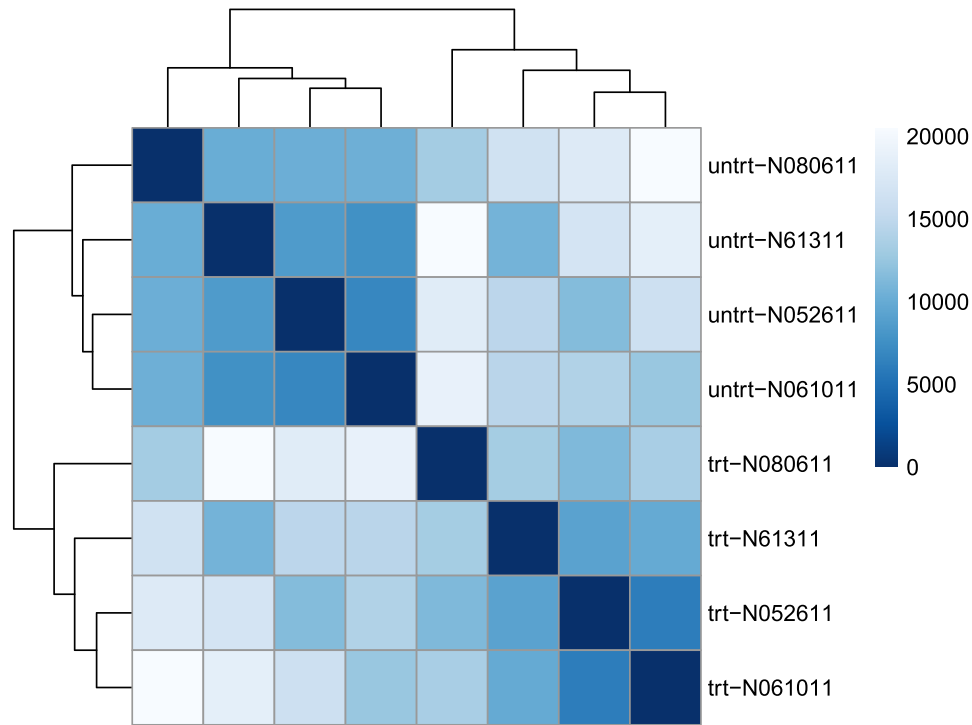
```
sampleDistMatrix <- as.matrix( sampleDists )
rownames(sampleDistMatrix) <- paste( rld$dex, rld$cell, sep="-" )
colnames(sampleDistMatrix) <- NULL
colors <- colorRampPalette( rev(brewer.pal(9, "Blues")) ) (255)
pheatmap(sampleDistMatrix,
         clustering_distance_rows=sampleDists,
         clustering_distance_cols=sampleDists,
         col=colors)
```

Note that we have changed the row names of the distance matrix to contain treatment type and patient number instead of sample ID, so that we have all this information in view when looking at the heatmap.

Another option for calculating sample distances is to use the *Poisson Distance*<sup>25</sup>, implemented in the *PoiClaClu* package. This measure of dissimilarity between counts also takes the inherent variance structure of counts into consideration when calculating the distances between samples. The *PoissonDistance* function takes the original count matrix (not normalized, as it normalizes counts internally) with samples as rows instead of columns, so we need to transpose the counts in `dds`.

```
library("PoiClaClu")
poisd <- PoissonDistance(t(counts(dds)))
```

We plot the *Poisson Distance* heatmap in **Figure 4**.



**Figure 4.** Heatmap of sample-to-sample distances using the *Poisson Distance*.

```
samplePoisDistMatrix <- as.matrix( poisd$dd )
rownames(samplePoisDistMatrix) <- paste( rld$dex, rld$cell, sep="-" )
colnames(samplePoisDistMatrix) <- NULL
pheatmap(samplePoisDistMatrix,
          clustering_distance_rows=poisd$dd,
          clustering_distance_cols=poisd$dd,
          col=colors)
```

### PCA plot

Another way to visualize sample-to-sample distances is a principal components analysis (PCA). In this ordination method, the data points (here, the samples) are projected onto the 2D plane such that they spread out in the two directions that capture the most of the variance across samples. The x-axis is the direction that separates the data points the most. The coordinates of the samples in this direction are called *PC1*. In our PCA of samples, a direction is a linear combination of genes. For the current data, *PC1* is associated with the separation between the treated and untreated samples, and so the genes that contribute the most to this direction are ones in which the treated and untreated samples show strong differences in their transformed counts. The y-axis is the direction (it must be *orthogonal* to the first direction) that separates the data the second most. The coordinates of the samples in this direction are written *PC2*. We can see in this case that the second direction is separating the samples according to the donor. The percent of the total variance that is contained in the direction is printed in the axis label. Note that these percentages do not add to 100%, because there are more directions that contain the remaining variance (although each of these remaining dimensions will explain less than the two that we see).

```
plotPCA(rld, intgroup = c("dex", "cell"))
```

Here, we have used the function *plotPCA* that comes with *DESeq2*. The two terms specified by *intgroup* are the interesting groups for labeling the samples; they tell the function to use them to choose colors. We can also build the PCA plot from scratch using the *ggplot2* package<sup>26</sup>. This is done by asking the *plotPCA* function to return the data used for plotting rather than building the plot. See the *ggplot2* [documentation](#) for more details on using *ggplot*.

```
(pcadata <- plotPCA(rld, intgroup = c( "dex", "cell"), returnData=TRUE))
```

```
##          PC1          PC2          group    dex    cell      name
## SRR1039508 -17.88882 -4.157888  untrt : N61311 untrt  N61311 SRR1039508
## SRR1039509   8.43675 -1.650879   trt : N61311   trt  N61311 SRR1039509
## SRR1039512 -10.27798 -5.066577  untrt : N052611 untrt  N052611 SRR1039512
## SRR1039513  17.64271 -3.910902   trt : N052611   trt  N052611 SRR1039513
## SRR1039516 -14.74069 15.990031  untrt : N080611 untrt  N080611 SRR1039516
## SRR1039517  10.95638 20.806181   trt : N080611   trt  N080611 SRR1039517
## SRR1039520 -12.12010 -11.962545  untrt : N061011 untrt  N061011 SRR1039520
## SRR1039521  17.99175 -10.047421   trt : N061011   trt  N061011 SRR1039521

percentVar <- round(100 * attr(pcaData, "percentVar"))
```

We can then use this data to build up a second plot in [Figure 6](#), specifying that the color of the points should reflect dexamethasone treatment and the shape should reflect the cell line.

```
library("ggplot2")

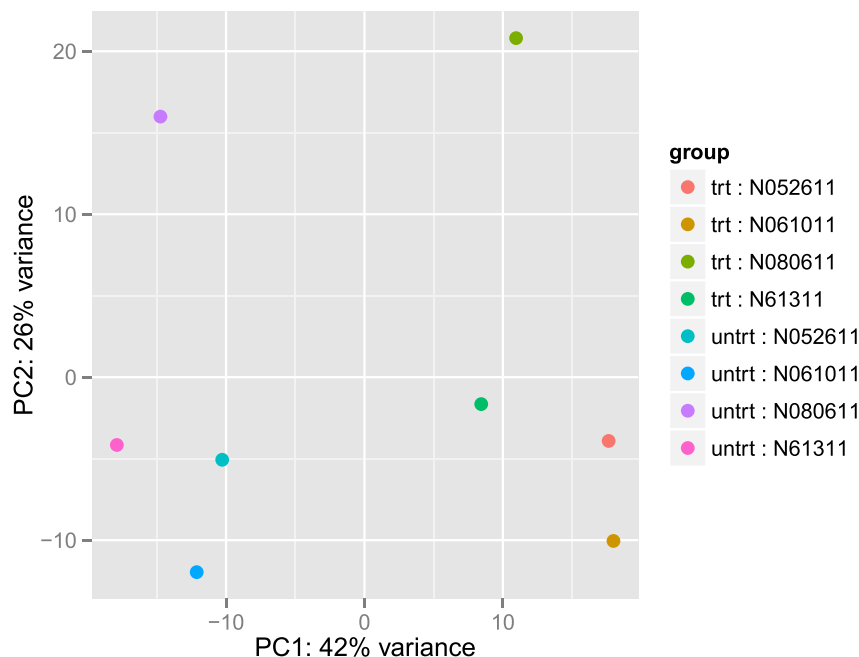
ggplot(pcaData, aes(PC1, PC2, color=dex, shape=cell)) + geom_point(size=3) +
  xlab(paste0("PC1: ", percentVar[1], "% variance")) +
  ylab(paste0("PC2: ", percentVar[2], "% variance"))
```

From the PCA plot, we see that the differences between cells (the different plotting shapes) are considerable, though not stronger than the differences due to treatment with dexamethasone (red vs blue color). This shows why it will be important to account for this in differential testing by using a design that incorporates the differences between cells. We are already set up for this design by assigning the formula `~ cell + dex` earlier.

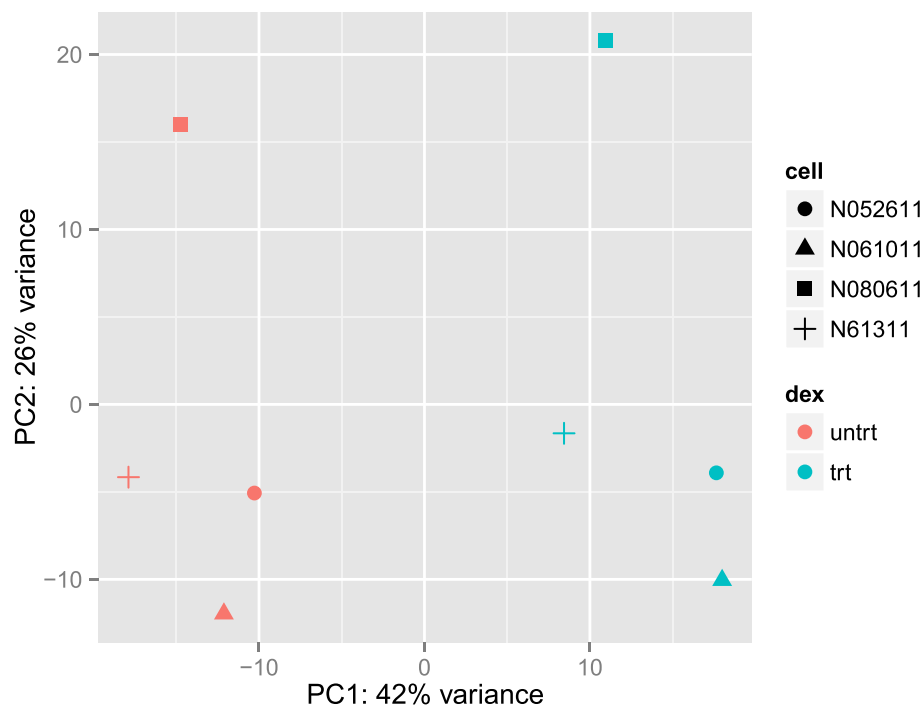
### MDS plot

Another plot, very similar to the PCA plot, can be made using the *multidimensional scaling* (MDS) function in base R. This is useful when we don't have a matrix of data, but only a matrix of distances. Here we compute the MDS for the distances calculated from the *rlog* transformed counts and plot these ([Figure 7](#)):

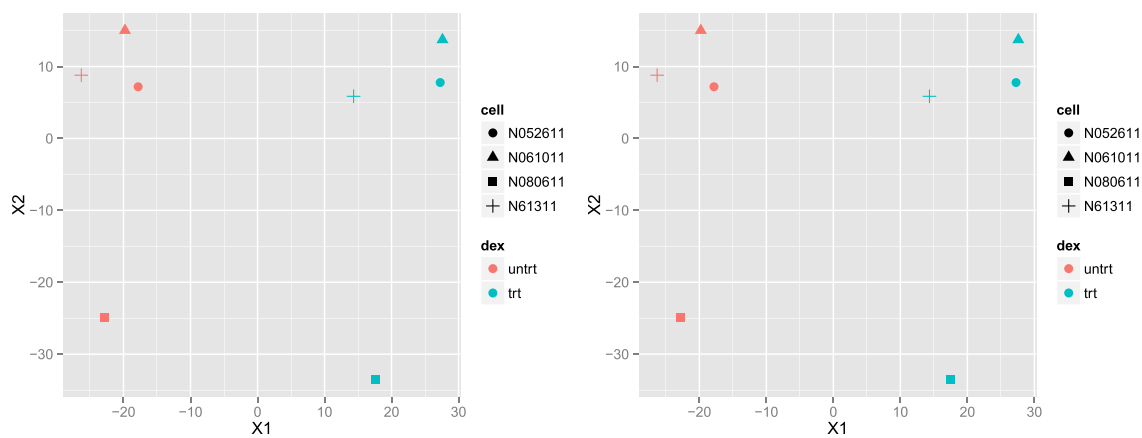
```
mdsData <- data.frame(cmdscale(sampleDistMatrix))
mds <- cbind(mdsData, as.data.frame(colData(rld)))
ggplot(mds, aes(X1, X2, color=dex, shape=cell)) + geom_point(size=3)
```



**Figure 5. PCA plot using the rlog-transformed values.** Each unique combination of treatment and cell line is given its own color.



**Figure 6. PCA plot using the rlog-transformed values with custom *ggplot2* code.** Here we specify cell line (plotting symbol) and dexamethasone treatment (color).



**Figure 7. MDS plots.** Shown are the plots based on the rlog-transformed values (left) and the *Poisson Distance* (right).

Creating the same plot for the *PoissonDistance* (also [Figure 7](#)):

```
mdsPoisData <- data.frame(cmdscale(samplePoisDistMatrix))
mdsPois <- cbind(mdsPoisData, as.data.frame(colData(dds)))
ggplot(mdsPois, aes(X1,X2,color=dex,shape=cell)) + geom_point(size=3)
```

## Differential expression analysis

### Running the differential expression pipeline

As we have already specified an experimental design when we created the *DESeqDataSet*, we can run the differential expression pipeline on the raw counts with a single call to the function *DESeq*:

```
dds <- DESeq(dds)
```

This function will print out a message for the various steps it performs. These are described in the manual page for *DESeq*, which can be accessed by typing `?DESeq`. Complete details and motivations for the statistical procedures that occur within the *DESeq* function are described in the *DESeq2* article<sup>2</sup>. Briefly these steps are:

1. The estimation of size factors, controlling for differences in the counts due varying sequencing depth of the samples.
2. The estimation of dispersion values. The dispersion parameter captures how much the counts for the samples will vary around an expected value. Note that the expected value takes into consideration the sequencing depth and differences that can be attributed to variables in the design formula.
3. Fitting a final generalized linear model using the size factors and dispersion values estimated above, which gives estimates of the log fold changes.

A *DESeqDataSet* is returned that contains all the fitted parameters within it, and the following section describes how to extract out results tables of interest from this object.

We note that, while the *DESeq* function accomplishes all of the default *DESeq2* estimation steps described in the methods paper, it is also possible to incorporate alternative normalization routines or dispersion estimates. For example, alternative size factors (a vector with a value for each sample) can be easily supplied using the `sizeFactors<-` function. Alternative normalization factors that replace size factors and additionally account for differential GC- or length-biases across samples can also be provided. These normalization factors can be estimated by Bioconductor software packages such as *EDASeq*<sup>27</sup> or *cqn*<sup>28</sup>. Details on how to provide these normalization factors are shown in the *DESeq2* vignette. Statistical methods such as *RUVSeq*<sup>29</sup> or *svaseq*<sup>30</sup> that detect hidden structure among the samples, for example, un-annotated batches, can also be used, and an example of this is shown in a [later section](#). Finally, alternative dispersion estimates can be obtained using other methods such as *DSS*<sup>5</sup> and provided to *DESeq2* using the `dispersions<-` function, and then followed by either `nbinomWaldTest` or `nbinomLRT`. The *DESeq2* dispersion estimator is very similar in its theoretical approach to the one of *DSS*.

### Building the results table

Calling *results* without any arguments will extract the estimated log2 fold changes and *p* values for the last variable in the design formula. If there are more than 2 levels for this variable, *results* will extract the results table for a comparison of the last level over the first level. This comparison is printed at the top of the output: dex trt vs untrt.

```
(res <- results(dds))

## log2 fold change (MAP): dex trt vs untrt
## Wald test p-value: dex trt vs untrt
## DataFrame with 29391 rows and 6 columns
##           baseMean log2FoldChange    lfcSE      stat      pvalue      padj
##           <numeric>      <numeric> <numeric> <numeric> <numeric> <numeric>
## ENSG000000000003 708.6021697 -0.37423028 0.09872592 -3.7905980 0.000150285 0.001224146
## ENSG000000000419 520.2979006  0.20214241 0.10929202  1.8495625 0.064376631 0.189223539
## ENSG000000000457 237.1630368  0.03624420 0.13682871  0.2648874 0.791096181 0.907794192
```

```
## ENSG00000000460 57.9326331 -0.08520813 0.24645454 -0.3457357 0.729541350 0.875201476
## ENSG00000000938 0.3180984 -0.11522629 0.14589383 -0.7897955 0.429647219 NA
## ...
## ENSG00000273485 1.2864477 0.03490688 0.2986168 0.1168952 0.9069431 NA
## ENSG00000273486 15.4525365 -0.09662406 0.3385222 -0.2854290 0.7753155 0.8990371
## ENSG00000273487 8.1632350 0.56255493 0.3731295 1.5076666 0.1316399 0.3177048
## ENSG00000273488 8.5844790 0.10794134 0.3680474 0.2932811 0.7693073 0.8960855
## ENSG00000273489 0.2758994 0.11249632 0.1420250 0.7920882 0.4283092 NA
```

As `res` is a *DataFrame* object, it carries metadata with information on the meaning of the columns:

```
mcols(res, use.names=TRUE)

## DataFrame with 6 rows and 2 columns
##           type           description
##      <character>      <character>
## baseMean      intermediate mean of normalized counts for all samples
## log2FoldChange results log2 fold change (MAP): dex trt vs untrt
## lfcSE          results      standard error: dex trt vs untrt
## stat           results      Wald statistic: dex trt vs untrt
## pvalue         results      Wald test p-value: dex trt vs untrt
## padj           results      BH adjusted p-values
```

The first column, `baseMean`, is just the average of the normalized count values, dividing by size factors, taken over all samples in the *DESeqDataSet*. The remaining four columns refer to a specific contrast, namely the comparison of the `trt` level over the `untrt` level for the factor variable `dex`. We will find out below how to obtain other contrasts.

The column `log2FoldChange` is the effect size estimate. It tells us how much the gene's expression seems to have changed due to treatment with dexamethasone in comparison to untreated samples. This value is reported on a logarithmic scale to base 2: for example, a log2 fold change of 1.5 means that the gene's expression is increased by a multiplicative factor of  $2^{1.5} \approx 2.82$ .

Of course, this estimate has an uncertainty associated with it, which is available in the column `lfcSE`, the standard error estimate for the log2 fold change estimate. We can also express the uncertainty of a particular effect size estimate as the result of a statistical test. The purpose of a test for differential expression is to test whether the data provides sufficient evidence to conclude that this value is really different from zero. *DESeq2* performs for each gene a *hypothesis test* to see whether evidence is sufficient to decide against the *null hypothesis* that there is zero effect of the treatment on the gene and that the observed difference between treatment and control was merely caused by experimental variability (i.e., the type of variability that you can expect between different samples in the same treatment group).

As usual in statistics, the result of this test is reported as a *p* value, and it is found in the column `pvalue`. A *p* value indicates the probability that a fold change as strong as the observed one, or even stronger, would be seen under the situation described by the null hypothesis. The adjusted *p* values satisfy the property that thresholding at a specific value defines a set of tests (one for each gene) with a bounded false discovery rate (FDR), typically a useful metric for assessing which genes to target for further analysis. For example, the set of genes with adjusted *p* value less than 0.1 should contain no more than 10% false positives.

A *p* value as reported by a statistical method is only valid given that the model assumptions match the observed data. The statistical model used by *DESeq2* was chosen to be flexible enough to model a typical RNA-seq experiment. Many benchmarking efforts have demonstrated that *DESeq2* generally controls its specificity (the reported *p* values) and precision (the reported FDR associated with adjusted *p* values) on real and simulated datasets<sup>31–34</sup>.

We can also summarize the results with the following line of code, which reports some additional information, that will be covered in later sections.

```
summary(res)

##
## out of 29391 with nonzero total read count
## adjusted p-value < 0.1
## LFC > 0 (up)      : 2647, 9%
## LFC < 0 (down)    : 2250, 7.7%
## outliers [1]      : 0, 0%
## low counts [2]    : 11756, 40%
## (mean count < 5.2)
## [1] see 'cooksCutoff' argument of ?results
## [2] see 'independentFiltering' argument of ?results
```

Note that there are many genes with differential expression due to dexamethasone treatment at the FDR level of 10%. This makes sense, as the smooth muscle cells of the airway are known to react to glucocorticoid steroids. However, there are two ways to be more strict about which set of genes are considered significant:

- lower the false discovery rate threshold (the threshold on `padj` in the results table)
- raise the log2 fold change threshold from 0 using the `lfcThreshold` argument of `results`

If we lower the false discovery rate threshold, we should also tell this value to `results()`, so that the function will use an alternative threshold for the optimal independent filtering step:

```
res.05 <- results(dds, alpha=.05)
table(res.05$padj < .05)

##
## FALSE  TRUE
## 12095   4070
```

If we want to raise the log2 fold change threshold, so that we test for genes that show more substantial changes due to treatment, we simply supply a value on the log2 scale. For example, by specifying `lfcThreshold=1`, we test for genes that show significant effects of treatment on gene counts more than doubling or less than halving, because  $2^1 = 2$ . Note that this procedure is not the same as simply selecting the genes with estimated log2 fold change above a threshold, because here we perform a *statistical test* for whether the log2 fold change is not greater than the threshold, as reflected in new *p* values.

```
resLFC1 <- results(dds, lfcThreshold=1)
table(resLFC1$padj < 0.1)

##
## FALSE  TRUE
## 14492   204
```

Sometimes a subset of the *p* values in `res` will be NA (“not available”). This is *DESeq*’s way of reporting that all counts for this gene were zero, and hence no test was applied. In addition, *p* values can be assigned NA if the gene was excluded from analysis because it contained an extreme count outlier. For more information, see the outlier detection section of the *DESeq2* vignette.

If you use the results from an R analysis package in published research, you can find the proper citation for the software by typing `citation("pkgName")`, where you would substitute the name of the package for `pkgName`. Citing methods papers helps to support and reward the individuals who put time into open source software for genomic data analysis.

### Other comparisons

In general, the results for a comparison of any two levels of a variable can be extracted using the `contrast` argument to `results`. The user should specify three values: the name of the variable, the name of the level for the numerator, and the name of the level for the denominator. Here we extract results for the log2 of the fold change of one cell line over another:

```

results(dds, contrast=c("cell", "N061011", "N61311"))

## log2 fold change (MAP): cell N061011 vs N61311
## Wald test p-value: cell N061011 vs N61311
## DataFrame with 29391 rows and 6 columns
##
##      baseMean log2FoldChange      lfcSE      stat      pvalue      padj
##      <numeric>      <numeric> <numeric> <numeric> <numeric> <numeric>
## ENSG000000000003 708.6021697  0.29054171 0.13600021  2.13633281 0.0326523 0.1981039
## ENSG000000000419 520.2979006 -0.05069310 0.14916364 -0.33984894 0.7339703 0.9238903
## ENSG000000000457 237.1630368  0.01474318 0.18161982  0.08117606 0.9353019 0.9862379
## ENSG000000000460 57.9326331  0.20241839 0.28064506  0.72126120 0.4707488 0.8108444
## ENSG000000000938  0.3180984  0.00000000 0.07169692  0.00000000 1.0000000      NA
## ...
## ENSG000000273485  1.2864477 -0.180248108 0.16456445 -1.095304052 0.2733835      NA
## ENSG000000273486 15.4525365 -0.029979349 0.30827915 -0.097247409 0.9225299      NA
## ENSG000000273487  8.1632350 -0.001914497 0.28117903 -0.006808819 0.9945674      NA
## ENSG000000273488  8.5844790  0.380608540 0.29209485  1.303030638 0.1925643      NA
## ENSG000000273489  0.2758994  0.000000000 0.06955643  0.000000000 1.0000000      NA

```

If results for an interaction term are desired, the name argument of *results* should be used. Please see the help for the *results* function for more details.

### Multiple testing

In high-throughput biology, we are careful to not use the *p* values directly as evidence against the null, but to correct for *multiple testing*. What would happen if we were to simply threshold the *p* values at a low value, say 0.05? There are 5722 genes with a *p* value below 0.05 among the 29391 genes, for which the test succeeded in reporting a *p* value:

```

sum(res$pvalue < 0.05, na.rm=TRUE)

## [1] 5722

sum(!is.na(res$pvalue))

## [1] 29391

```

Now, assume for a moment that the null hypothesis is true for all genes, i.e., no gene is affected by the treatment with dexamethasone. Then, by the definition of the *p* value, we expect up to 5% of the genes to have a *p* value below 0.05. This amounts to 1470 genes. If we just considered the list of genes with a *p* value below 0.05 as differentially expressed, this list should therefore be expected to contain up to  $1470 / 5722 = 26\%$  false positives.

*DESeq2* uses the Benjamini-Hochberg (BH) adjustment<sup>35</sup> as implemented in the base R *p.adjust* function; in brief, this method calculates for each gene an adjusted *p* value that answers the following question: if one called significant all genes with an adjusted *p* value less than or equal to this gene's adjusted *p* value threshold, what would be the fraction of false positives (the *false discovery rate*, FDR) among them, in the sense of the calculation outlined above? These values, called the BH-adjusted *p* values, are given in the column *padj* of the *res* object.

The FDR is a useful statistic for many high-throughput experiments, as we are often interested in reporting or focusing on a set of interesting genes, and we would like to put an upper bound on the percent of false positives in this set.

Hence, if we consider a fraction of 10% false positives acceptable, we can consider all genes with an adjusted *p* value below 10% = 0.1 as significant. How many such genes are there?

```

sum(res$padj < 0.1, na.rm=TRUE)

## [1] 4897

```

We subset the results table to these genes and then sort it by the log2 fold change estimate to get the significant genes with the strongest down-regulation:

```

resSig <- subset(res, padj < 0.1)
head(resSig[ order(resSig$log2FoldChange), ])

```



```
## log2 fold change (MAP): dex trt vs untrt
## Wald test p-value: dex trt vs untrt
## DataFrame with 6 rows and 6 columns
##
```

	baseMean	log2FoldChange	lfcSE	stat	pvalue	padj
##	<numeric>	<numeric>	<numeric>	<numeric>	<numeric>	<numeric>
## ENSG00000162692	508.17023	-3.452454	0.1763751	-19.574503	2.551125e-85	3.460700e-82
## ENSG00000146006	46.80760	-2.856273	0.3366877	-8.483451	2.186122e-17	1.073879e-15
## ENSG00000105989	333.21469	-2.850960	0.1754638	-16.248133	2.302720e-59	1.194366e-56
## ENSG00000214814	243.27698	-2.759539	0.2224907	-12.402938	2.519140e-35	4.113429e-33
## ENSG00000267339	26.23357	-2.743928	0.3511985	-7.813041	5.582443e-15	2.182846e-13
## ENSG00000013293	244.49733	-2.646116	0.1981216	-13.356020	1.092517e-40	2.240295e-38

... and with the strongest up-regulation:

```
head(resSig[ order(resSig$log2FoldChange, decreasing=TRUE), ])

## log2 fold change (MAP): dex trt vs untrt
## Wald test p-value: dex trt vs untrt
## DataFrame with 6 rows and 6 columns
##
```

	baseMean	log2FoldChange	lfcSE	stat	pvalue	padj
##	<numeric>	<numeric>	<numeric>	<numeric>	<numeric>	<numeric>
## ENSG00000179593	67.24305	4.880507	0.3308119	14.75312	2.937594e-49	9.418996e-47
## ENSG00000109906	385.07103	4.860877	0.3321627	14.63403	1.704000e-48	5.181040e-46
## ENSG00000152583	997.43977	4.315374	0.1723805	25.03400	2.608143e-138	4.599460e-134
## ENSG00000250978	56.31819	4.090157	0.3288246	12.43872	1.610666e-35	2.679631e-33
## ENSG00000163884	561.10717	4.078073	0.2103212	19.38974	9.421379e-84	1.038413e-80
## ENSG00000168309	159.52692	3.991146	0.2547755	15.66534	2.610147e-55	1.180255e-52

## Plotting results

A quick way to visualize the counts for a particular gene is to use the *plotCounts* function that takes as arguments the *DESeqDataSet*, a gene name, and the group over which to plot the counts (Figure 8).

```
topGene <- rownames(res)[which.min(res$padj)]
plotCounts(dds, gene=topGene, intgroup=c("dex"))
```

We can also make custom plots using the *ggplot* function from the *ggplot2* package (Figure 9).

```
geneCounts <- plotCounts(dds, gene=topGene, intgroup=c("dex", "cell"), returnData=TRUE)
ggplot(geneCounts, aes(x=dex, y=count, color=cell)) +
  scale_y_log10() +
  geom_point(position=position_jitter(width=.1, height=0), size=3)

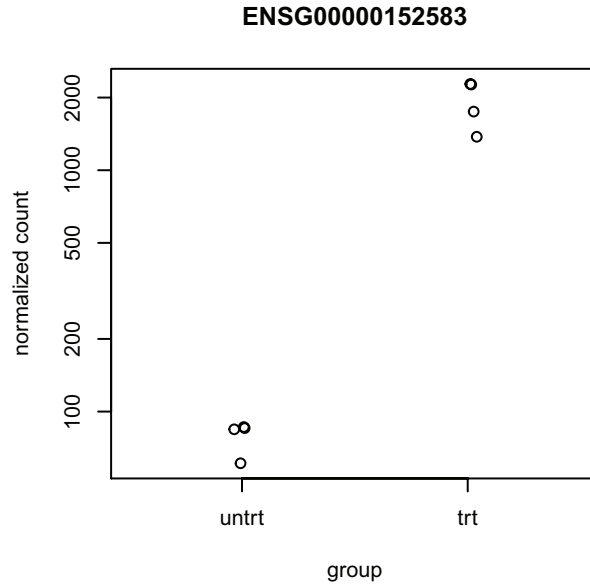
ggplot(geneCounts, aes(x=dex, y=count, fill=dex)) +
  scale_y_log10() +
  geom_dotplot(binaxis="y", stackdir="center")

ggplot(geneCounts, aes(x=dex, y=count, color=cell, group=cell)) +
  scale_y_log10() + geom_point(size=3) + geom_line()
```

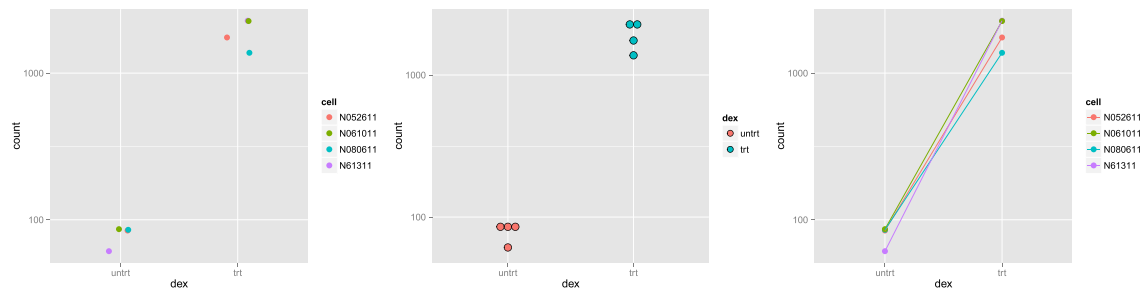
An *MA-plot*<sup>36</sup> provides a useful overview for an experiment with a two-group comparison (Figure 10).

```
plotMA(res, ylim=c(-5, 5))
```

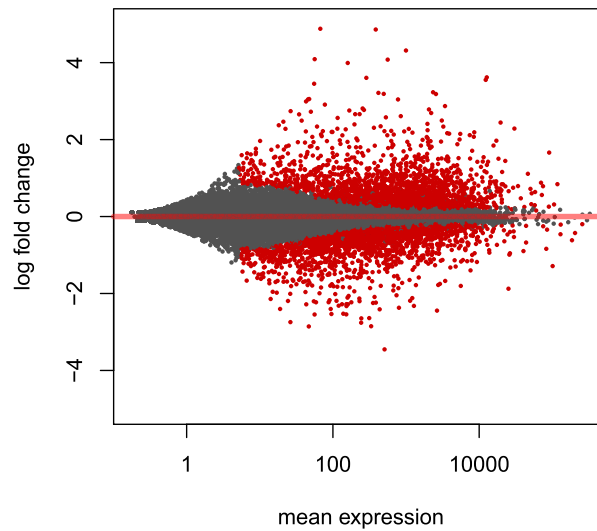
The *DESeq2* package uses statistical techniques to moderate log2 fold changes from genes with very low counts and highly variable counts, as can be seen by the narrowing of the vertical spread of points on the left side of the MA-plot. For a detailed explanation of the rationale of moderated fold changes, please see the *DESeq2* paper<sup>2</sup>. This plot demonstrates that only genes with a large average normalized count contain sufficient information to yield a significant call.



**Figure 8.** Normalized counts for a single gene over treatment group.



**Figure 9.** Normalized counts over treatment using different *ggplot2* styles. The plots are customized using *ggplot2* options for jitter (left), dots (middle), or with lines connecting cell line (right). Note that the *DESeq2* test that was used takes into account the cell line effect, so the rightmost figure more closely depicts the difference being tested.



**Figure 10.** An MA-plot of changes induced by treatment. The log<sub>2</sub> fold change for a particular comparison is plotted on the y-axis and the average of the counts normalized by size factor is shown on the x-axis ("M" for minus, because a log ratio is equal to log minus log, and "A" for average). Each gene is represented with a dot. Genes with an adjusted *p* value below a threshold (here 0.1, the default) are shown in red.

We can also make an MA-plot for the results table in which we raised the log2 fold change threshold (Figure 11). We can label individual points on the MA-plot as well. Here we use the *with* R function to plot a circle and text for a selected row of the results object. Within the *with* function, only the *baseMean* and *log2FoldChange* values for the selected rows of *res* are used.

```
plotMA(resLFC1, ylim=c(-5,5))
topGene <- rownames(resLFC1)[which.min(resLFC1$padj)]
with(resLFC1[topGene, ], {
  points(baseMean, log2FoldChange, col="dodgerblue", cex=2, lwd=2)
  text(baseMean, log2FoldChange, topGene, pos=2, col="dodgerblue")
})
```

Another useful diagnostic plot is the histogram of the *p* values (Figure 12). This plot is best formed by excluding genes with very small counts, which otherwise generate spikes in the histogram.

```
hist(res$pvalue[res$baseMean > 1], breaks=0:20/20, col="grey50", border="white")
```

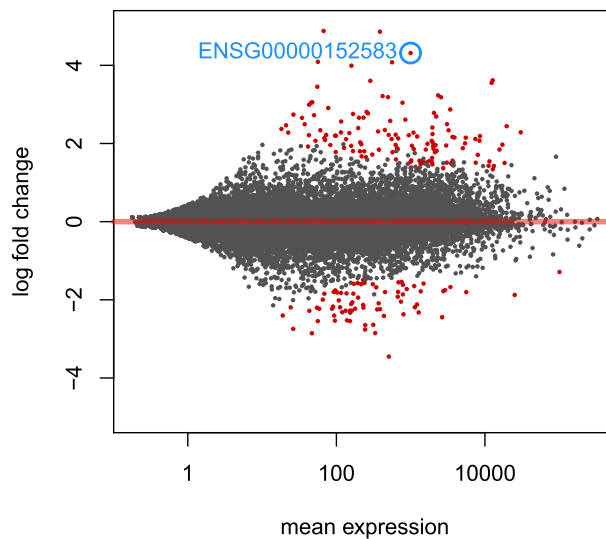
### Gene clustering

In the sample distance heatmap made previously, the dendrogram at the side shows us a hierarchical clustering of the samples. Such a clustering can also be performed for the genes. Since the clustering is only relevant for genes that actually carry a signal, one usually would only cluster a subset of the most highly variable genes. Here, for demonstration, let us select the 20 genes with the highest variance across samples. We will work with the *rlog* transformed counts:

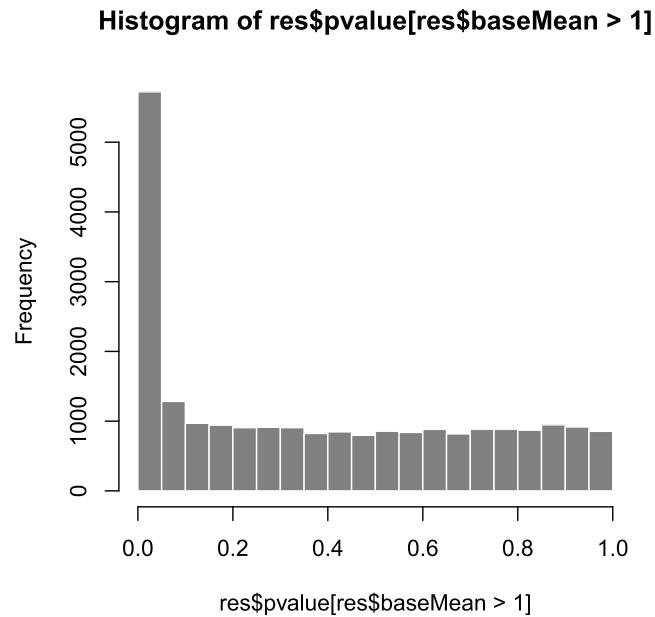
```
library("genefilter")
topVarGenes <- head(order(rowVars(assay(rld)), decreasing=TRUE), 20)
```

The heatmap becomes more interesting if we do not look at absolute expression strength but rather at the amount by which each gene deviates in a specific sample from the gene's average across all samples. Hence, we center each genes' values across samples, and plot a heatmap (Figure 13). We provide a *data.frame* that instructs the *pheatmap* function how to label the columns.

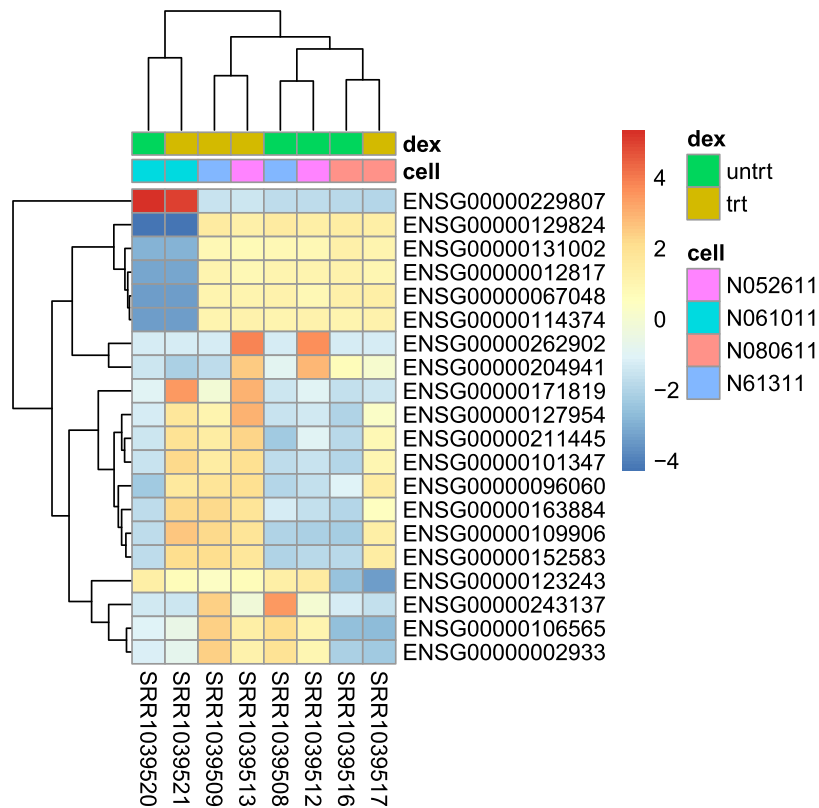
```
mat <- assay(rld)[topVarGenes, ]
mat <- mat - rowMeans(mat)
df <- as.data.frame(colData(rld)[,c("cell", "dex")])
pheatmap(mat, annotation_col=df)
```



**Figure 11. An MA-plot of a test for large log2 fold changes.** The red points indicate genes for which the log2 fold change was significantly higher than 1 or less than -1 (treatment resulting in more than doubling or less than halving of the normalized counts) with adjusted *p* value less than 0.1. The point circled in blue indicates the gene with the lowest adjusted *p* value.



**Figure 12.** Histogram of *p* values for genes with mean normalized count larger than 1.



**Figure 13.** Heatmap of relative log-transformed values across samples. Treatment status and cell line information are shown with colored bars at the top of the heatmap. Note that a set of genes at the top of the heatmap are separating the N061011 cell line from the others. In the center of the heatmap, we see a set of genes for which the dexamethasone treated samples have higher gene expression.

### Independent filtering

The MA plot highlights an important property of RNA-seq data. For weakly expressed genes, we have no chance of seeing differential expression, because the low read counts suffer from such high Poisson noise that any biological effect is drowned in the uncertainties from the sampling at a low rate. We can also show this by examining the ratio of small  $p$  values (say, less than, 0.05) for genes binned by mean normalized count. We will use the results table subjected to the threshold to show what this looks like in a case when there are few tests with small  $p$  value.

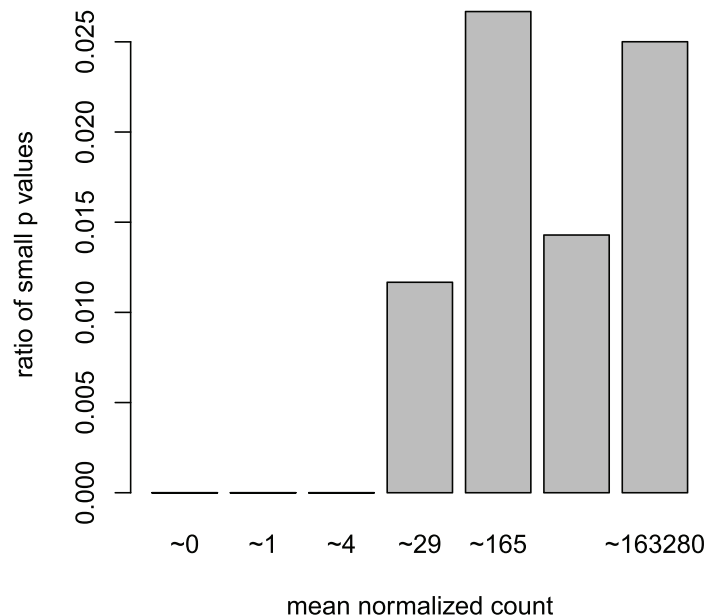
In the following code chunk, we create bins using the *quantile* function, bin the genes by base mean using *cut*, rename the levels of the bins using the middle point, calculate the ratio of  $p$  values less than 0.05 for each bin, and finally plot these ratios (Figure 14).

```
qs <- c(0, quantile(resLFC1$baseMean[resLFC1$baseMean > 0], 0:6/6))
bins <- cut(resLFC1$baseMean, qs)
levels(bins) <- paste0("~", round(signif(.5*qs[-1] + .5*qs[-length(qs)], 2)))
ratios <- tapply(resLFC1$pvalue, bins, function(p) mean(p < .05, na.rm=TRUE))
barplot(ratios, xlab="mean normalized count", ylab="ratio of small p values")
```

At first sight, there may seem to be little benefit in filtering out these genes. After all, the test found them to be non-significant anyway. However, these genes have an influence on the multiple testing adjustment, whose performance improves if such genes are removed. By removing the low count genes from the input to the FDR procedure, we can find more genes to be significant among those that we keep, and so improved the power of our test. This approach is known as *independent filtering*.

The *DESeq2* software automatically performs independent filtering that maximizes the number of genes with adjusted  $p$  value less than a critical value (by default,  $\alpha$  is set to 0.1). This automatic independent filtering is performed by, and can be controlled by, the *results* function.

The term *independent* highlights an important caveat. Such filtering is permissible only if the statistic that we filter on (here the mean of normalized counts across all samples) is independent of the actual test statistic (the  $p$  value) under the null hypothesis. Otherwise, the filtering would invalidate the test and consequently the assumptions of the BH



**Figure 14.** The ratio of small  $p$  values for genes binned by mean normalized count. Here the  $p$  values are for a test of log2 fold change greater than 1 or less than -1. This plot demonstrates that genes with low mean count are underpowered, and best excluded before multiple test correction.

procedure. The independent filtering software used inside *DESeq2* comes from the *genefilter* package, that contains a reference to a paper describing the statistical foundation for independent filtering<sup>37</sup>.

In addition, a newer approach to multiple test correction is Independent Hypothesis Weighting<sup>38</sup>, which applies a more gradual, weighting based approach rather than a dichotomous filter. Both of the cited papers are also good places to catch up on the statistical background and justification of these approaches. The *DESeq2* vignette has an example of using Independent Hypothesis Weighting as implemented in the *IHW* Bioconductor package instead of the Independent Filtering procedure.

### Annotating and exporting results

Our result table so far only contains information about Ensembl gene IDs, but alternative gene names may be more informative for collaborators. Bioconductor's annotation packages help with mapping various ID schemes to each other. We load the *AnnotationDbi* package and the annotation package *org.Hs.eg.db*:

```
library("AnnotationDbi")
library("org.Hs.eg.db")
```

This is the organism annotation package ("org") for *Homo sapiens* ("Hs"), organized as an *AnnotationDbi* database package ("db"), using Entrez Gene IDs ("eg") as primary key. To get a list of all available key types, use:

```
columns(org.Hs.eg.db)

## [1] "ENTREZID" "PFAM" "IPI" "PROSITE" "ACCNUM" "ALIAS"
## [7] "CHR" "CHRLOC" "CHRLOCEND" "ENZYME" "MAP" "PATH"
## [13] "PMID" "REFSEQ" "SYMBOL" "UNIGENE" "ENSEMBL" "ENSEMBLPROT"
## [19] "ENSEMBLTRANS" "GENENAME" "UNIPROT" "GO" "EVIDENCE" "ONTOLOGY"
## [25] "GOALL" "EVIDENCEALL" "ONTOLOGYALL" "OMIM" "UCSCKG"
```

We can use the *mapIds* function to add individual columns to our results table. We provide the row names of our results table as a key, and specify that *keytype*=ENSEMBL. The *column* argument tells the *mapIds* function which information we want, and the *multiVals* argument tells the function what to do if there are multiple possible values for a single input value. Here we ask to just give us back the first one that occurs in the database. To add the gene symbol and Entrez ID, we call *mapIds* twice.

```
res$symbol <- mapIds(org.Hs.eg.db,
                     keys=row.names(res),
                     column="SYMBOL",
                     keytype="ENSEMBL",
                     multiVals="first")
res$entrez <- mapIds(org.Hs.eg.db,
                     keys=row.names(res),
                     column="ENTREZID",
                     keytype="ENSEMBL",
                     multiVals="first")
```

Now the results have the desired external gene IDs:

```
resOrdered <- res[order(res$padj),]
head(resOrdered)

## log2 fold change (MAP): dex trt vs untrt
## Wald test p-value: dex trt vs untrt
## DataFrame with 6 rows and 8 columns
##      baseMean log2FoldChange lfcSE      stat      pvalue      padj
##      <numeric>    <numeric> <numeric> <numeric>    <numeric>    <numeric>
## ENSG00000152583  997.4398    4.315374 0.1723805 25.03400 2.608143e-138 4.599460e-134
## ENSG00000165995  495.0929    3.188413 0.1277306 24.96201 1.581556e-137 1.394537e-133
## ENSG00000101347 12703.3871    3.617791 0.1499256 24.13057 1.194421e-128 6.472441e-125
## ENSG00000120129  3409.0294    2.871106 0.1190242 24.12204 1.468090e-128 6.472441e-125
```

```
## ENSG00000189221 2341.7673 3.230290 0.1373499 23.51869 2.626434e-122 9.263434e-119
## ENSG00000211445 12285.6151 3.552498 0.1589749 22.34628 1.312430e-110 3.857449e-107
##
##          symbol      entrez
##          <character> <character>
## ENSG00000152583      SPARCL1      8404
## ENSG00000165995      CACNB2       783
## ENSG00000101347      SAMHD1      25939
## ENSG00000120129      DUSP1       1843
## ENSG00000189221      MAOA        4128
## ENSG00000211445      GPX3        2878
```

## Exporting results

You can easily save the results table in a CSV file, that you can then share or load with a spreadsheet program such as Excel. The call to `as.data.frame` is necessary to convert the *DataFrame* object (*IRanges* package) to a *data.frame* object that can be processed by `write.csv`. Here, we take just the top 100 genes for demonstration.

```
resOrderedDF <- as.data.frame(resOrdered)[1:100,]
write.csv(resOrderedDF, file="results.csv")
```

Another more sophisticated package for exporting results from various Bioconductor analysis packages is the *ReportingTools* package<sup>39</sup>. *ReportingTools* will automatically generate dynamic HTML documents, including links to external databases using gene identifiers and boxplots summarizing the normalized counts across groups. See the *ReportingTools* vignettes for full details. The simplest version of creating a dynamic *ReportingTools* report is performed with the following code:

```
library("ReportingTools")
htmlRep <- HTMLReport(shortName="report", title="My report",
                      reportDirectory="./report")
publish(resOrderedDF, htmlRep)
url <- finish(htmlRep)
browseURL(url)
```

## Plotting fold changes in genomic space

If we have used the `summarizeOverlaps` function to count the reads, then our *DESeqDataSet* object is built on top of ready-to-use Bioconductor objects specifying the genomic ranges of the genes. We can therefore easily plot our differential expression results in genomic space. While the `results` function by default returns a *DataFrame*, using the `format` argument, we can ask for *GRanges* or *GRangesList* output.

```
(resGR <- results(dds, lfcThreshold=1, format="GRanges"))

## GRanges object with 29391 ranges and 6 metadata columns:
##          seqnames          ranges strand |      baseMean  log2FoldChange
##          <Rle>           <IRanges> <Rle> |      <numeric>      <numeric>
## ENSG00000000003      X [ 99883667, 99894988] - | 708.602169691234 -0.374230275713608
## ENSG000000000419    20 [ 49551404, 49575092] - | 520.297900552084  0.202142414893829
## ENSG000000000457      1 [169818772, 169863408] - | 237.163036796015  0.0362442044069634
## ENSG000000000460      1 [169631245, 169823221] + | 57.9326331250967 -0.0852081341501509
## ENSG000000000938      1 [ 27938575, 27961788] - | 0.318098378392895 -0.115226286496983
##          ...      ...      ...      ...      ...
## ENSG00000273485     10 [105209953, 105210609] + | 1.28644765243289  0.0349068755370733
## ENSG00000273486      3 [136556180, 136557863] - | 15.4525365439045 -0.0966240584195589
## ENSG00000273487      1 [ 92654794, 92656264] + | 8.1632349843654  0.562554926745931
## ENSG00000273488      3 [100080031, 100080481] + | 8.58447903624707  0.107941339873098
## ENSG00000273489      7 [131178723, 131182453] - | 0.275899382507797  0.112496317318932
##          lfcSE      stat      pvalue      padj
##          <numeric> <numeric> <numeric> <numeric>
## ENSG00000000003  0.098725921418789      0      1      1
## ENSG000000000419 0.109292016112333      0      1      1
## ENSG000000000457 0.136828705643854      0      1      1
```

```
## ENSG00000000460 0.246454541134745      0      1      1
## ENSG00000000938 0.145893828687766      0      1     <NA>
##      ...      ...      ...      ...      ...
## ENSG00000273485 0.298616754374375      0      1     <NA>
## ENSG00000273486 0.338522172238827      0      1     <NA>
## ENSG00000273487 0.373129529007307      0      1     <NA>
## ENSG00000273488 0.368047431494871      0      1     <NA>
## ENSG00000273489 0.142024983011115      0      1     <NA>
## -----
## seqinfo: 722 sequences (1 circular) from an unspecified genome
```

We need to add the symbol again for labeling the genes on the plot:

```
resGR$symbol <- mapIds(org.Hs.eg.db, names(resGR), "SYMBOL", "ENSEMBL")
```

We will use the *Gviz* package for plotting the GRanges and associated metadata: the log fold changes due to dexamethasone treatment.

```
library("Gviz")
```

The following code chunk specifies a window of 1 million base pairs upstream and downstream from the gene with the smallest *p* value. We create a subset of our full results, for genes within the window. We add the gene symbol as a name, if the symbol exists or is not duplicated in our subset.

```
window <- resGR[topGene] + 1e6
strand(window) <- "*"
resGRsub <- resGR[resGR %over% window]
naOrDup <- is.na(resGRsub$symbol) | duplicated(resGRsub$symbol)
resGRsub$group <- ifelse(naOrDup, names(resGRsub), resGRsub$symbol)
```

We create a vector specifying if the genes in this subset had a low false discovery rate.

```
sig <- factor(ifelse(resGRsub$padj < .1 & !is.na(resGRsub$padj), "sig", "notsig"))
```

We can then plot the results using *Gviz* functions (Figure 15). We create an axis track specifying our location in the genome, a track that will show the genes and their names, colored by significance, and a data track that will draw vertical bars showing the moderated log fold change produced by *DESeq2*, which we know are only large when the effect is well supported by the information in the counts.

```
options(ucscChromosomeNames=FALSE)
g <- GenomeAxisTrack()
a <- AnnotationTrack(resGRsub, name="gene ranges", feature=sig)
d <- DataTrack(resGRsub, data="log2FoldChange", baseline=0,
               type="h", name="log2 fold change", strand="+")
plotTracks(list(g,d,a), groupAnnotation="group", notsig="grey", sig="hotpink")
```

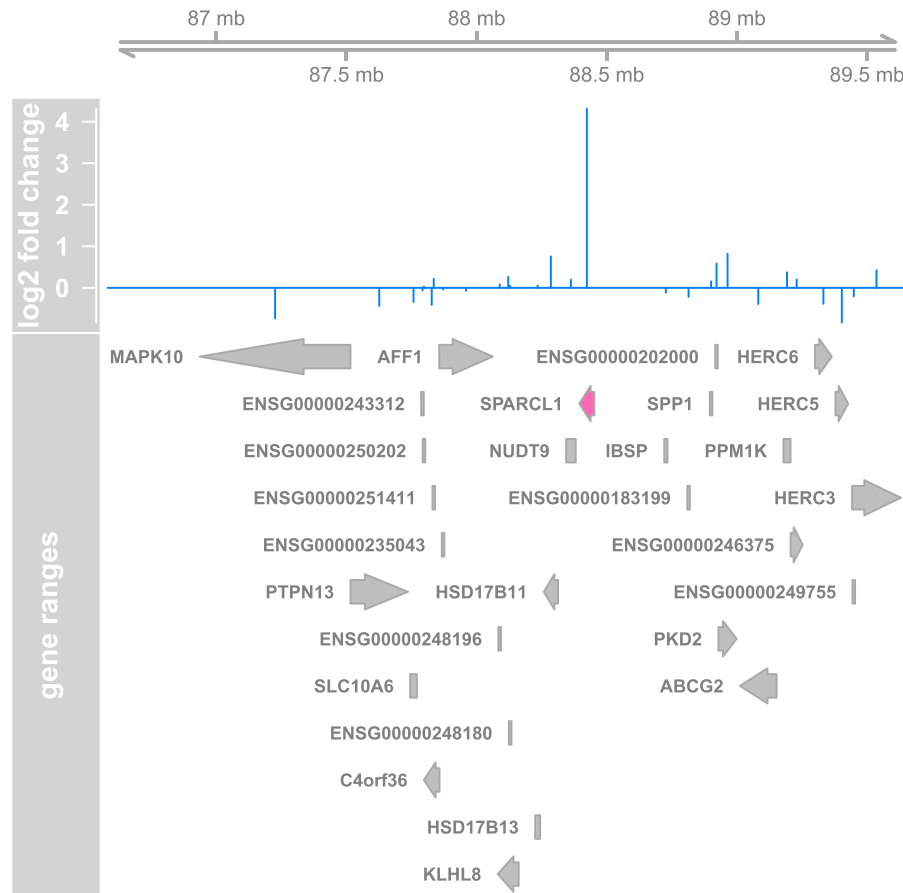
## Removing hidden batch effects

Suppose we did not know that there were different cell lines involved in the experiment, only that there was treatment with dexamethasone. The cell line effect on the counts then would represent some hidden and unwanted variation that might be affecting many or all of the genes in the dataset. We can use statistical methods designed for RNA-seq from the *sva* package<sup>30</sup> to detect such groupings of the samples, and then we can add these to the *DESeqDataSet* design, in order to account for them. The *SVA* package uses the term *surrogate variables* for the estimated variables that we want to account for in our analysis. Another package for detecting hidden batches is the *RUVSeq* package<sup>39</sup>, with the acronym “Remove Unwanted Variation”.

```
library("sva")
```

Below we obtain a matrix of normalized counts for which the average count across samples is larger than 1. As we described above, we are trying to recover any hidden batch effects, supposing that we do not know the cell line information. So we use a full model matrix with the *dex* variable, and a reduced, or null, model matrix with only





**Figure 15. Plotting log<sub>2</sub> fold changes in a genomic region surrounding the gene with smallest adjusted *p* value.** Genes highlighted in pink have adjusted *p* value less than 0.1.

an intercept term. Finally we specify that we want to estimate 2 surrogate variables. For more information read the manual page for the *svaseq* function by typing `?svaseq`.

```
dat <- counts(dds, normalized=TRUE)
idx <- rowMeans(dat) > 1
dat <- dat[idx,]
mod <- model.matrix(~ dex, colData(dds))
mod0 <- model.matrix(~ 1, colData(dds))
svseq <- svaseq(dat, mod, mod0, n.sv=2)

## Number of significant surrogate variables is: 2
## Iteration (out of 5 ):1 2 3 4 5

svseq$sv

##           [,1]      [,2]
## [1,] 0.2481108 -0.52600157
## [2,] 0.2629867 -0.58115433
## [3,] 0.1502704  0.27428267
## [4,] 0.2023800  0.38419545
## [5,] -0.6086586 -0.07854931
## [6,] -0.6101210 -0.02923693
## [7,] 0.1788509  0.25708985
## [8,] 0.1761807  0.29937417
```

Because we actually do know the cell lines, we can see how well the SVA method did at recovering these variables (Figure 16).

```
par(mfrow=c(2,1),mar=c(3,5,3,1))
stripchart(svseq$sv[,1] ~ dds$cell,vertical=TRUE,main="SV1")
abline(h=0)
stripchart(svseq$sv[,2] ~ dds$cell,vertical=TRUE,main="SV2")
abline(h=0)
```

Finally, in order to use SVA to remove any effect on the counts from our surrogate variables, we simply add these two surrogate variables as columns to the *DESeqDataSet* and then add them to the design:

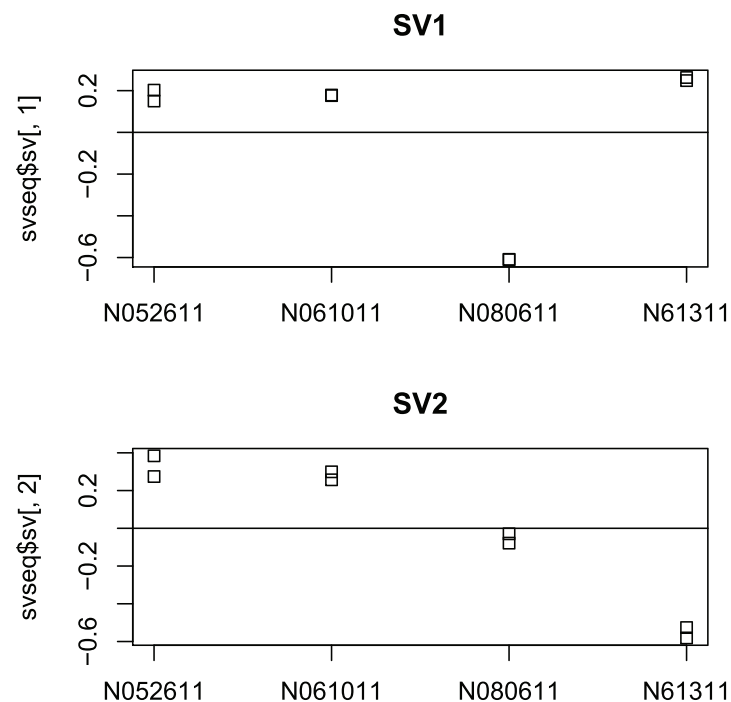
```
ddssva <- dds
ddssva$SV1 <- svseq$sv[,1]
ddssva$SV2 <- svseq$sv[,2]
design(ddssva) <- ~ SV1 + SV2 + dex
```

We could then produce results controlling for surrogate variables by running *DESeq* with the new design:

```
ddssva <- DESeq(ddssva)
```

### Time course experiments

*DESeq2* can be used to analyze time course experiments, for example to find those genes that react in a condition-specific manner over time, compared to a set of baseline samples. Here we demonstrate a basic time course analysis with the *fission* data package, that contains gene counts for an RNA-seq time course of fission yeast<sup>40</sup>. The yeast were



**Figure 16. Surrogate variables 1 and 2 plotted over cell line.** Here, we know the hidden source of variation (cell line), and therefore can see how the SVA procedure is able to identify sources of variation which are correlated with cell line.

exposed to oxidative stress, and half of the samples contain a deletion of the gene *atf21*. We use a design formula that models the strain difference at time 0, the difference over time, and any strain-specific differences over time (the interaction term `strain:minute`).

```
library("fission")
data("fission")
ddsTC <- DESeqDataSet(fission, ~ strain + minute + strain:minute)
```

The following chunk of code performs a likelihood ratio test. In this statistical test, two models are compared: a *full* model which includes all of the effects that we are interested in modeling, and a *reduced* model, in which we remove specific effects that we are interested in subjecting to null hypothesis testing. In our case, we want to test whether there are strain-specific differences over time, so for the reduced model, we remove the interaction term between strain and time (`strain:minute`), leaving only the general trend of differences across time, and a single term for the differences across strain. Genes with small *p* values from this test are those which at one or more time points after time 0 showed a strain-specific effect. Note therefore that this will not give small *p* values to genes that moved up or down over time in the same way in both strains.

```
ddsTC <- DESeq(ddsTC, test="LRT", reduced = ~ strain + minute)
resTC <- results(ddsTC)
resTC$symbol <- mcols(ddsTC)$symbol
head(resTC[order(resTC$padj),],4)

## log2 fold change (MLE): strainmut.minute180
## LRT p-value: '~ strain + minute + strain:minute' vs '~ strain + minute'
## Dataframe with 4 rows and 7 columns
##
```

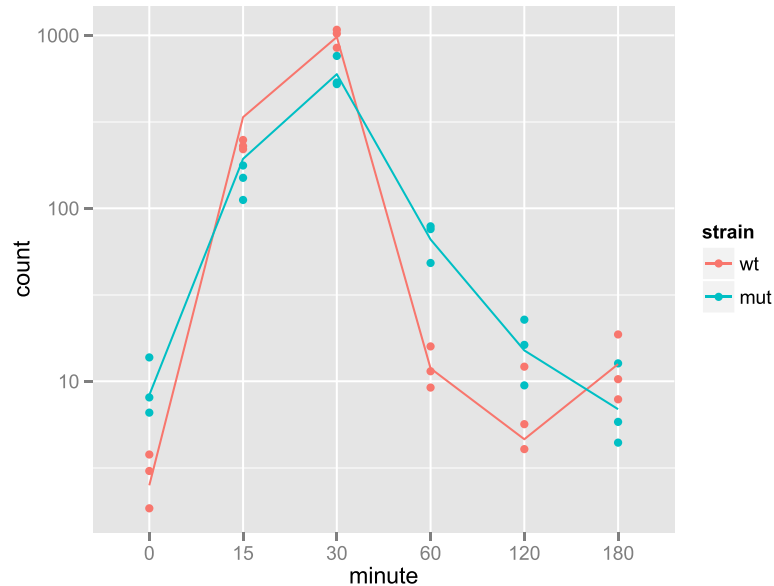
	baseMean	log2FoldChange	lfcSE	stat	pvalue	padj	symbol
##	<numeric>	<numeric>	<numeric>	<numeric>	<numeric>	<numeric>	<character>
## SPBC2F12.09c	174.6712	-2.65763737	0.7498270	99.23199	7.671942e-20	5.186233e-16	atf21
## SPAC1002.18	444.5050	-0.05118463	0.2030554	57.72116	3.590886e-11	1.213719e-07	urg
## SPAC1002.19	336.3732	-0.39267927	0.5749887	43.26296	3.268243e-08	7.364441e-05	urg1
## SPAC1002.17c	261.7731	-1.13882844	0.6072772	39.13718	2.228530e-07	3.766216e-04	urg2

This is just one of the tests that can be applied to time series data. Another option would be to model the counts as a smooth function of time, and to include an interaction term of the condition with the smooth function. It is possible to build such a model using spline basis functions within R.

We can plot the counts for the groups over time using *ggplot2*, for the gene with the smallest adjusted *p* value, testing for condition-dependent time profile and accounting for differences at time 0 (Figure 17). Keep in mind that the interaction terms are the *difference* between the two groups at a given time after accounting for the difference at time 0.

```
data <- plotCounts(ddsTC, which.min(resTC$padj),
                  intgroup=c("minute","strain"), returnData=TRUE)
ggplot(data, aes(x=minute, y=count, color=strain, group=strain)) +
  geom_point() + stat_smooth(se=FALSE,method="loess") + scale_y_log10()
```

Wald tests for the log2 fold changes at individual time points can be investigated using the `test` argument to `results`:



**Figure 17.** Normalized counts for a gene with condition-specific changes over time.

```
resultsNames(ddsTC)

## [1] "Intercept"          "strain_mut_vs_wt"    "minute_15_vs_0"     "minute_30_vs_0"
## [5] "minute_60_vs_0"     "minute_120_vs_0"    "minute_180_vs_0"    "strainmut.minute15"
## [9] "strainmut.minute30" "strainmut.minute60" "strainmut.minute120" "strainmut.minute180"

res30 <- results(ddsTC, name="strainmut.minute30", test="Wald")
res30[which.min(resTC$padj),]

## log2 fold change (MLE): strainmut.minute30
## Wald test p-value: strainmut.minute30
## DataFrame with 1 row and 6 columns
##           baseMean log2FoldChange    lfcSE      stat      pvalue      padj
##           <numeric>      <numeric> <numeric> <numeric> <numeric> <numeric>
## SPBC2F12.09c   174.6712      -2.601034 0.6314737  -4.11899 3.805364e-05 0.2572426
```

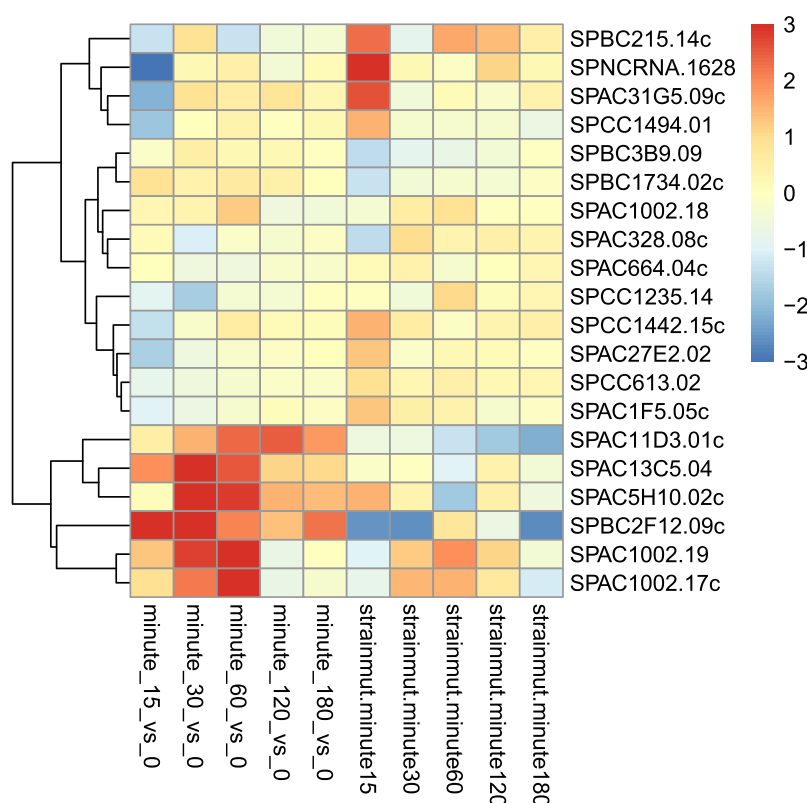
We can further more cluster significant genes by their profiles. We extract a matrix of the shrunk log2 fold changes using the *coef* function:

```
betas <- coef(ddsTC)
colnames(betas)

## [1] "Intercept"          "strain_mut_vs_wt"    "minute_15_vs_0"     "minute_30_vs_0"
## [5] "minute_60_vs_0"     "minute_120_vs_0"    "minute_180_vs_0"    "strainmut.minute15"
## [9] "strainmut.minute30" "strainmut.minute60" "strainmut.minute120" "strainmut.minute180"
```

We can now plot the log2 fold changes in a heatmap (Figure 18).

```
library("pheatmap")
topGenes <- head(order(resTC$padj), 20)
mat <- betas[topGenes, -c(1,2)]
thr <- 3
mat[mat < -thr] <- -thr
mat[mat > thr] <- thr
pheatmap(mat, breaks=seq(from=-thr, to=thr, length=101),
         cluster_col=FALSE)
```



**Figure 18.** Heatmap of log2 fold changes for genes with smallest adjusted  $p$  value. The bottom set of genes show strong induction of expression for the baseline samples in minutes 15–60 (red boxes in the bottom left corner), but then have slight differences for the mutant strain (shown in the boxes in the bottom right corner).

## Session information

Here we report the software versions that were used to produce the first version of this workflow. Users today should use the most current software versions and use the code from the [live Bioconductor workflow](#).

As the last part of this document, we call the function `sessionInfo`, which reports the version numbers of R and all the packages used in this session. It is good practice to always keep such a record of this as it will help to trace down what has happened in case an R script ceases to work or gives different results because the functions have been changed in a newer version of one of your packages. By including it at the bottom of a script, your reports will become more reproducible.

The session information should also *always* be included in any emails to the [Bioconductor support site](#) along with all code used in the analysis.

```
sessionInfo()

## R version 3.2.1 (2015-06-18)
## Platform: x86_64-apple-darwin13.4.0 (64-bit)
## Running under: OS X 10.10.3 (Yosemite)
##
## locale:
##  [1] en_US.UTF-8/en_US.UTF-8/en_US.UTF-8/C/en_US.UTF-8/en_US.UTF-8
##
```

```
## attached base packages:
## [1] grid stats4 parallel stats graphics grDevices datasets utils methods
## [10] base
##
## other attached packages:
## [1] fission_0.102.0 sva_3.14.0 mgcv_1.8-7
## [4] nlme_3.1-122 Gviz_1.12.1 org.Hs.eg.db_3.1.2
## [7] RSQLite_1.0.0 DBI_0.3.1 genefilter_1.50.0
## [10] ggplot2_1.0.1 PoiClaClu_1.0.2 RColorBrewer_1.1-2
## [13] pheatmap_1.0.7 DESeq2_1.8.1 RcppArmadillo_0.5.400.2.0
## [16] Rcpp_0.12.0 BiocParallel_1.2.20 GenomicAlignments_1.4.1
## [19] GenomicFeatures_1.20.3 AnnotationDbi_1.30.1 Biobase_2.28.0
## [22] Rsamtools_1.20.4 Biostrings_2.36.4 XVector_0.8.0
## [25] airway_0.102.0 GenomicRanges_1.20.6 GenomeInfoDb_1.4.2
## [28] IRanges_2.2.7 S4Vectors_0.6.4 BiocGenerics_0.14.0
## [31] knitr_1.11 BiocStyle_1.6.0 rmarkdown_0.8
##
## loaded via a namespace (and not attached):
## [1] splines_3.2.1 Formula_1.2-1 latticeExtra_0.6-26
## [4] BSgenome_1.36.3 yaml_2.1.13 lattice_0.20-33
## [7] biovizBase_1.16.0 digest_0.6.8 colorspace_1.2-6
## [10] htmltools_0.2.6 Matrix_1.2-2 plyr_1.8.3
## [13] XML_3.98-1.3 biomaRt_2.24.0 zlibbioc_1.14.0
## [16] xtable_1.7-4 scales_0.3.0 annotate_1.46.1
## [19] nnet_7.3-10 proto_0.3-10 survival_2.38-3
## [22] magrittr_1.5 evaluate_0.7.2 MASS_7.3-43
## [25] foreign_0.8-66 tools_3.2.1 formatR_1.2
## [28] matrixStats_0.14.2 stringr_1.0.0 munsell_0.4.2
## [31] locfit_1.5-9.1 cluster_2.0.3 lambda.r_1.1.7
## [34] futile.logger_1.4.1 RCurl_1.95-4.7 dichromat_2.0-0
## [37] VariantAnnotation_1.14.13 bitops_1.0-6 labeling_0.3
## [40] gtable_0.1.2 reshape2_1.4.1 gridExtra_2.0.0
## [43] rtracklayer_1.28.9 Hmisc_3.16-0 futile.options_1.0.0
## [46] stringi_0.5-5 geneplotter_1.46.0 rpart_4.1-10
## [49] acepack_1.3-3.3
```

### Author contributions

MIL, SA and WH wrote the workflow. VK assisted in reproducible delivery of the workflow materials.

### Competing interests

The authors declare that they have no competing interests.

### Grant information

MIL is supported by NIH grant 5T32CA009337-35. WH and SA acknowledge funding from the European Union's 7th Framework Programme (Health) via Project Radiant.

*I confirm that the funders had no role in study design, data collection and analysis, decision to publish, or preparation of the manuscript.*

### Acknowledgments

The authors thank all users of DESeq and DESeq2 who provided valuable feedback.

## References

1. Himes BE, Jiang X, Wagner P, *et al.*: **RNA-Seq transcriptome profiling identifies CRISPLD2 as a glucocorticoid responsive gene that modulates cytokine function in airway smooth muscle cells.** *PLoS One*. 2014; 9(6): e99625.  
[PubMed Abstract](#) | [Publisher Full Text](#) | [Free Full Text](#)
2. Love MI, Huber W, Anders S: **Moderated estimation of fold change and dispersion for RNA-seq data with DESeq2.** *Genome Biol*. 2014; 15(12): 550.  
[PubMed Abstract](#) | [Publisher Full Text](#) | [Free Full Text](#)
3. Robinson MD, McCarthy DJ, Smyth GK: **edgeR: a Bioconductor package for differential expression analysis of digital gene expression data.** *Bioinformatics*. 2010; 26(1): 139–140.  
[PubMed Abstract](#) | [Publisher Full Text](#) | [Free Full Text](#)
4. Law CW, Chen Y, Shi W, *et al.*: **voom: Precision weights unlock linear model analysis tools for RNA-seq read counts.** *Genome Biol*. 2014; 15(2): R29.  
[PubMed Abstract](#) | [Publisher Full Text](#) | [Free Full Text](#)
5. Wu H, Wang C, Wu Z: **A new shrinkage estimator for dispersion improves differential expression detection in RNA-seq data.** *Biostatistics*. 2013; 14(2): 232–243.  
[PubMed Abstract](#) | [Publisher Full Text](#) | [Free Full Text](#)
6. Leng N, Dawson JA, Thomson JA, *et al.*: **EBSeq: an empirical Bayes hierarchical model for inference in RNA-seq experiments.** *Bioinformatics*. 2013; 29(8): 1035–1043.  
[PubMed Abstract](#) | [Publisher Full Text](#) | [Free Full Text](#)
7. Hardcastle TJ, Kelly KA: **baySeq: empirical Bayesian methods for identifying differential expression in sequence count data.** *BMC Bioinformatics*. 2010; 11(1): 422.  
[PubMed Abstract](#) | [Publisher Full Text](#) | [Free Full Text](#)
8. Patro R, Mount SM, Kingsford C: **Salmon enables alignment-free isoform quantification from RNA-seq reads using lightweight algorithms.** *Nat Biotechnol*. 2014; 32(5): 462–464.  
[PubMed Abstract](#) | [Publisher Full Text](#) | [Free Full Text](#)
9. Patro R, Duggal G, Love MI, *et al.*: **Salmon provides accurate, fast, and bias-aware transcript expression estimates using dual-phase inference.** *bioRxiv*. 2016.  
[Publisher Full Text](#)
10. Bray NL, Pimentel H, Melsted P, *et al.*: **Near-optimal probabilistic rna-seq quantification.** *Nat Biotechnol*. 2016; 34(5): 525–527.  
[PubMed Abstract](#) | [Publisher Full Text](#)
11. Li B, Dewey CN: **RSEM: accurate transcript quantification from RNA-Seq data with or without a reference genome.** *BMC Bioinformatics*. 2011; 12: 323.  
[PubMed Abstract](#) | [Publisher Full Text](#) | [Free Full Text](#)
12. Trapnell C, Hendrickson DG, Sauvageau M, *et al.*: **Differential analysis of gene regulation at transcript resolution with RNA-seq.** *Nat Biotechnol*. 2013; 31(1): 46–53.  
[PubMed Abstract](#) | [Publisher Full Text](#) | [Free Full Text](#)
13. Robert C, Watson M: **Errors in RNA-Seq quantification affect genes of relevance to human disease.** *Genome Biol*. 2015; 16(1): 177.  
[PubMed Abstract](#) | [Publisher Full Text](#) | [Free Full Text](#)
14. Soneson C, Love MI, Robinson MD: **Differential analyses for RNA-seq: transcript-level estimates improve gene-level inferences [version 2; referees: 2 approved].** *F1000Res*. 2015; 4: 1521.  
[PubMed Abstract](#) | [Publisher Full Text](#) | [Free Full Text](#)
15. Flicek P, Amodio MR, Barrell D, *et al.*: **Ensembl 2014.** *Nucleic Acids Res*. 2014; 42(Database issue): D749–D755.  
[PubMed Abstract](#) | [Publisher Full Text](#) | [Free Full Text](#)
16. Dobin A, Davis CA, Schlesinger F, *et al.*: **STAR: ultrafast universal RNA-seq aligner.** *Bioinformatics*. 2013; 29(1): 15–21.  
[PubMed Abstract](#) | [Publisher Full Text](#) | [Free Full Text](#)
17. Li H, Handsaker B, Wysoker A, *et al.*: **The Sequence Alignment/Map format and SAMtools.** *Bioinformatics (Oxford, England)*. 2009; 25(16): 2078–2079.  
[PubMed Abstract](#) | [Publisher Full Text](#) | [Free Full Text](#)
18. Lawrence M, Huber W, Pagès H, *et al.*: **Software for computing and annotating genomic ranges.** *PLoS Comput Biol*. 2013; 9(8): e1003118.  
[PubMed Abstract](#) | [Publisher Full Text](#) | [Free Full Text](#)
19. Liao Y, Smyth GK, Shi W: **featureCounts: an efficient general purpose program for assigning sequence reads to genomic features.** *Bioinformatics*. 2014; 30(7): 923–930.  
[PubMed Abstract](#) | [Publisher Full Text](#)
20. Anders S, Pyl PT, Huber W: **HTSeq—a Python framework to work with high-throughput sequencing data.** *Bioinformatics*. 2015; 31(2): 166–169.  
[PubMed Abstract](#) | [Publisher Full Text](#) | [Free Full Text](#)
21. Kent WJ, Sugnet CW, Furey TS, *et al.*: **The human genome browser at UCSC.** *Genome Res*. 2002; 12(6): 996–1006.  
[PubMed Abstract](#) | [Publisher Full Text](#) | [Free Full Text](#)
22. Durinck S, Spellman PT, Birney E, *et al.*: **Mapping identifiers for the integration of genomic datasets with the R/Bioconductor package biomaRt.** *Nat Protoc*. 2009; 4(8): 1184–1191.  
[PubMed Abstract](#) | [Publisher Full Text](#) | [Free Full Text](#)
23. Huber W, Carey VJ, Gentleman R, *et al.*: **Orchestrating high-throughput genomic analysis with Bioconductor.** *Nat Methods*. 2015; 12(2): 115–121.  
[PubMed Abstract](#) | [Publisher Full Text](#) | [Free Full Text](#)
24. Anders S, Huber W: **Differential expression analysis for sequence count data.** *Genome Biol*. 2010; 11(10): R106.  
[PubMed Abstract](#) | [Publisher Full Text](#) | [Free Full Text](#)
25. Witten DM: **Classification and clustering of sequencing data using a Poisson model.** *Ann Appl Stat*. 2011; 5(4): 2493–2518.  
[Publisher Full Text](#)
26. Wickham H: **ggplot2.** Springer, New York, NY, 2009.  
[Publisher Full Text](#)
27. Risso D, Schwartz K, Sherlock G, *et al.*: **GC-Content Normalization for RNA-Seq Data.** *BMC Bioinformatics*. 2011; 12(1): 480.  
[PubMed Abstract](#) | [Publisher Full Text](#) | [Free Full Text](#)
28. Hansen KD, Irizarry RA, Wu Z: **Removing technical variability in RNA-seq data using conditional quantile normalization.** *Biostatistics*. 2012; 13(2): 204–216.  
[PubMed Abstract](#) | [Publisher Full Text](#) | [Free Full Text](#)
29. Risso D, Ngai J, Speed TP, *et al.*: **Normalization of RNA-seq data using factor analysis of control genes or samples.** *Nat Biotechnol*. 2014; 32(9): 896–902.  
[PubMed Abstract](#) | [Publisher Full Text](#) | [Free Full Text](#)
30. Leek JT: **svaseq: removing batch effects and other unwanted noise from sequencing data.** *Nucleic Acids Res*. 2014; 42(21): e161.  
[PubMed Abstract](#) | [Publisher Full Text](#) | [Free Full Text](#)
31. Schurch NJ, Schofield P, Gierliński M, *et al.*: **How many biological replicates are needed in an RNA-seq experiment and which differential expression tool should you use?** *RNA*. 2016; 22(6): 839–851.  
[PubMed Abstract](#) | [Publisher Full Text](#) | [Free Full Text](#)
32. Raithel S, Johnson L, Galliat M, *et al.*: **Inferential considerations for low-count RNA-seq transcripts: a case study on the dominant prairie grass *Andropogon gerardii*.** *BMC Genomics*. 2016; 17(1): 140.  
[PubMed Abstract](#) | [Publisher Full Text](#) | [Free Full Text](#)
33. Bonafede E, Picard F, Robin S, *et al.*: **Modeling overdispersion heterogeneity in differential expression analysis using mixtures.** *Biometrics*. 2016; 72(3): 804–14.  
[PubMed Abstract](#) | [Publisher Full Text](#)
34. Bi R, Liu P: **Sample size calculation while controlling false discovery rate for differential expression analysis with RNA-sequencing experiments.** *BMC Bioinformatics*. 2016; 17(1): 146.  
[PubMed Abstract](#) | [Publisher Full Text](#) | [Free Full Text](#)
35. Benjamini Y, Hochberg Y: **Controlling the False Discovery Rate: A Practical and Powerful Approach to Multiple Testing.** *J Roy Stat Soc B Met*. 1995; 57(1): 289–300.  
[Reference Source](#)
36. Dudoit S, Yang YH, Callow MJ, *et al.*: **Statistical methods for identifying differentially expressed genes in replicated cDNA microarray experiments.** In *Statistica Sinica*. 2002; 12: 111–139.  
[Reference Source](#)
37. Bourgon R, Gentleman R, Huber W: **Independent filtering increases detection power for high-throughput experiments.** *Proc Natl Acad Sci U S A*. 2010; 107(21): 9546–9551.  
[PubMed Abstract](#) | [Publisher Full Text](#) | [Free Full Text](#)
38. Ignatiadis N, Klaus B, Zaugg JB, *et al.*: **Data-driven hypothesis weighting increases detection power in genome-scale multiple testing.** *Nat Methods*. 2016; 13(7): 577–580.  
[PubMed Abstract](#) | [Publisher Full Text](#) | [Free Full Text](#)
39. Huntley MA, Larson JL, Chaivorapol C, *et al.*: **ReportingTools: an automated result processing and presentation toolkit for high-throughput genomic analyses.** *Bioinformatics*. 2013; 29(24): 3220–3221.  
[PubMed Abstract](#) | [Publisher Full Text](#)
40. Leong HS, Dawson K, Wirth C, *et al.*: **A global non-coding RNA system modulates fission yeast protein levels in response to stress.** *Nat Commun*. 2014; 5: 3947.  
[PubMed Abstract](#) | [Publisher Full Text](#) | [Free Full Text](#)

# Open Peer Review

Current Peer Review Status:  

---

Version 1

Reviewer Report 01 December 2015

<https://doi.org/10.5256/f1000research.7573.r10806>

© 2015 Wu Z. This is an open access peer review report distributed under the terms of the [Creative Commons Attribution License](#), which permits unrestricted use, distribution, and reproduction in any medium, provided the original work is properly cited.



**Zhijin Wu**

<sup>1</sup> Department of Biostatistics, Brown University, Providence, RI, USA

<sup>2</sup> Department of Biostatistics, Brown University, Providence, RI, USA

I find the workflow a very useful document, especially in teaching someone with limited R/Bioconductor experience, starting from the count table. In addition to DE analysis, the workflow included exploratory analysis and some diagnostics -- again, very handy as teaching material.

A few comments:

1. I like the example using a subset of reads in "locating alignment files" so alignment can be done instantly in a toy example. It would be more apparent, that in addition to having very small BAM files, if it is explicitly explained that a small GTF file is created for this example. The subsection before, on "Aligning reads to a reference genome", is harder to reproduce. Unlike the examples below, there is no toy fastq file here. It would be nice to either have some toy examples here as well, or to provide the links to some actual fastq files. The link to the GEO entry is provided, which does not directly point to fastq files.
2. To make the workflow even easier to follow and reproduce, maybe a list of required packages can be provided at the very beginning.
3. I agree with Dr. Risso that at least the main steps in the DE analysis should be mentioned, so that the user understands the major components that affect the analysis. The main workflow cannot include too many examples, but possible alternatives in normalization (for example, different choices in adjusting for sequencing depth and one may consider adjusting for more than just depth) and in dispersion estimation can be simply mentioned here so that users can check these out by themselves.
4. In the airway example, there is one important detail that is worth having a checkpoint. Here,  
  
"Because we used a column of *sampleTable* to produce the *bamfiles* vector, we know the columns of *se* are in the same order as the rows of *sampleTable*." The authors emphasized this later with the recommendation of keeping the column (sample) information in a



separate file, and "making sure that the rows correspond to the columns of the *SummarizedExperiment*".

I would recommend a checkpoint here (for example, by comparing *rownames(colData(se))* and *rownames(sampleTable)*), so that the users will always confirm the correct order. If this is messed up, all following analysis is a waste.

5. Regrading DE and multiple testing: It is worth mentioning that the "p-value" returned is a *nominal p-value*. The Wald test p-values are not necessarily valid p-values in all experiments. Though "by the definition of the p value, we expect up to 5% of the genes to have a p value below 0.05", this only applies to valid p-values. And if FDR is computed by adjusting nominal p-values, the *nominal FDR* may not be actual FDR either.
6. In diagnostics, Fig 14 is a useful tool. We find that the joint distribution the p-values and baseMean provides similar information -- there is no power for genes with very low base Mean. However, one would not want to guide filtering after the analysis has already been done. Though the authors explicitly wrote that the filtering should be independent, placing the example here may leave a reader with the impression that filtering can be done post hoc. The fact that genes with low counts have low power can be established without analyzing the actual data, and we recommend making the filtering decision truly independently, for example, using simulation in the design stage<sup>1</sup>.

Minor issues:

1. I wonder what the "avgLength" is in the sampleTable. SRR1039513 has avgLength 87 but if I read in the sam file I see that every read has length 63 just like the others.
2. The format of the R code is not consistent, such that some of these can be copied correctly, and some not (mostly involving quotation marks). For example in the second lines of R code,

`dir <- system.file("extdata", package="airway", mustWork=TRUE)`, the quotation around "airway".

## References

1. Wu H, Wang C, Wu Z: PROPER: comprehensive power evaluation for differential expression using RNA-seq. *Bioinformatics*. 2015; **31** (2): 233-41 [PubMed Abstract](#) | [Publisher Full Text](#)

**Competing Interests:** No competing interests were disclosed.

**I confirm that I have read this submission and believe that I have an appropriate level of expertise to confirm that it is of an acceptable scientific standard.**

Author Response 17 Nov 2016

**Michael Love**

We thank the reviewers for the effort they spent on our manuscript and for their insightful comments, which have guided us in the production of the revised, second version of the manuscript. We apologize for the delay in incorporating changes.

1) We added an explanation to Section *Locating alignment files*: "We also include a small subset of a GTF (gene transfer format) annotation file that has information about the genes contained in this small region. We will discuss this file in more depth below."

2) In the introduction, we added a reference to the *Session information* section.

3) We thank both reviewers for this advice and have added more explanations below the call to the *DESeq()* function in Section *Running the differential expression pipeline*.

4) We followed this advice and added a checkpoint to the workflow.

5) We appreciate the difference between the formal definition of a p-value as a statistic whose null distribution fulfills the stated requirement, and the nominal p-value returned by a test procedure. We have added a sentence touching on this topic, as well as links to a number of third-party benchmarking efforts which have determined that DESeq2's p-values are well calibrated for typical RNA-seq experiments.

6) We thank both reviewers, Dr. Wu and Dr. Risso, for raising this question. Below our reply to both of them.

The Independent Filtering procedure can in fact be done post hoc as long as the data-dependent covariate used for filtering is independent of the test statistic (the p value) under the null hypothesis. The independence does not require the a filter cutoff be chosen beforehand or chosen on a separate dataset. A proof of the principle of Independent Filtering is presented in the reference we cite in the article, Bourgon 2010. DESeq2's implementation of Independent Filtering also contains a procedure to ensure that it does not overfit noise in the p value distribution, by using smoothing to reduce the functional complexity of cutoff point optimization.

Additionally, the current release of DESeq2 allows for a generalization of Independent Filtering, which is called Independent Hypothesis Weighting (Ignatiadis 2016). We have included a description and link to this newer, and potentially more powerful approach to multiple test correction in the revised version. As with Independent Filtering, hypothesis weighting with weights derived from a data-dependent covariate requires that this covariate is independent of the test statistic (the p value) under the null hypothesis. Otherwise, the weighting would affect the null distribution of the test statistic and most likely invalidate it. Here, our covariate is the baseMean, and DESeq2 fulfills the requirement that its p values (under the null) are independent of the baseMean.

Minor:

1) These metadata were read in directly from the experimental metadata provided by the SRA. The collation of the metadata is described in the vignette for the airway Bioconductor data package. The values in this column are not used for the analysis, and here we simply report them "as is" from SRA.

2) This seems to be a limitation of the system that the journal is currently using to render the HTML or PDF on their website. We recommend that, for the purpose of running code in R, readers use the code in the Rmarkdown source file that is provided on the Bioconductor site:

<http://www.bioconductor.org/help/workflows/rnaseqGene>

**Competing Interests:** No competing interests were disclosed.

Reviewer Report 27 October 2015

<https://doi.org/10.5256/f1000research.7573.r10805>

© 2015 Risso D. This is an open access peer review report distributed under the terms of the [Creative Commons Attribution License](#), which permits unrestricted use, distribution, and reproduction in any medium, provided the original work is properly cited.



**Davide Risso** 

<sup>1</sup> Division of Biostatistics, School of Public Health, Li Ka Shing Center, University of California, Berkeley, Berkeley, CA, USA

<sup>2</sup> Division of Biostatistics, School of Public Health, Li Ka Shing Center, University of California, Berkeley, Berkeley, CA, USA

Love and colleagues describe a typical RNA-seq gene-level differential expression workflow, using their popular DESeq2 Bioconductor package, as well as other core and contributed Bioconductor packages. The paper is a valuable resource for researchers that are new to RNA-seq differential expression (DE) statistical analysis and/or want to learn how to carry out such analysis within R/Bioconductor.

The advantage of the presented workflow over *ad-hoc* pipelines is that (almost) the whole analysis (from aligned reads to DE results) is carried out within the open source Bioconductor project, facilitating transparency and reproducibility. I was pleased to be able to completely reproduce all the results and figures of the paper on my machine (although I was able to download the .Rmd file only from the Bioconductor and not from the F1000Research article page -- see next paragraph).

I have only a few points that the authors should address.

1. Most of the critical statistical steps of the DE analysis are "hidden" inside a single call to the "DESeq" wrapper function. I can see why the authors created and make use of this function

in the workflow, as a typical practitioner will not need to worry about the internal computations. However, the authors should consider adding a section illustrating the steps carried out by the DESeq function (normalization, dispersion estimation, model fitting), as this will have a great educational value.

2. Right below Figure 6 (mid page 18 in the pdf) the authors state that the model should account for "differences between cells [...] by using a paired design. [...] We are already set up for this design by assigning the formula  $\sim \text{cell} + \text{dex}$  earlier." The term "paired design" usually refers to a design where the same units are tested before and after a treatment, and the effect of the treatment is usually tested by modeling the differences between the measurements before and after. The specified formula describes a factorial design, where the effects of treatment and cell line are included as main effects in the model. Please make sure that the right terminology is used.
3. I found the section on independent filtering a bit confusing. Reading the fourth paragraph of the section (first paragraph of page 28 in the pdf), I understand that DESeq2 will decide how many genes to filter out by maximizing the number of genes with a low adjusted p-value. However, the next paragraph states that this type of filtering is permissible only if independent of the test statistics. How can the filtering be independent if the threshold is chosen by maximizing the number of significant genes?
4. It would be a nice addition to the manuscript to have a concluding paragraph describing how to download and reproduce the workflow.

Minor issues:

- The first time the authors mention Figure 1 they are referring to Figure 1 of a different paper, hence this should not link to the authors' Figure 1.
- Fourth paragraph of "The DESeqDataSet, sample information, and the design formula": the authors write `colData(dds)` although `dds` is not yet defined.
- The third paragraph of page 12 (of the pdf) is a bit confusing. Perhaps, it could be rephrased in terms of unsupervised problems. It's not clear why somebody with a supervised problem would want to omit the design at the EDA stage.
- Figure 4: the authors say that one should use unnormalized counts to compute the Poisson distances. Wouldn't this affect the heatmap if there are large sequencing depth differences between the samples? Or is the function internally adjusting for sequencing depth?
- The first paragraph of the "PCA plot" section should be re-written more clearly.
- The "reduced" argument of the DESeq function, used in the "Time course experiments" section, deserves a brief explanation for those readers that are not familiar with Likelihood Ratio Tests.

**Competing Interests:** No competing interests were disclosed.

**I confirm that I have read this submission and believe that I have an appropriate level of**

**expertise to confirm that it is of an acceptable scientific standard.**

Author Response 17 Nov 2016

**Michael Love**

We thank the reviewers for the effort they spent on our manuscript and for their insightful comments, which have guided us in the production of the revised, second version of the manuscript. We apologize for the delay in incorporating changes.

1) We thank both reviewers for this advice and have added more explanations below the call to the *DESeq()* function in Section *Running the differential expression pipeline*.

2) We have replaced the term "paired design" with "a design that incorporates the differences between cells".

3) This question touches upon the same issues as that by Dr. Wu. Here we refer to our combined reply to both questions above.

4) We followed this suggestion and added such an explanation to the Introduction.

Minor:

1) Thank you for pointing this out. We have removed this link.

2) We have removed the "(dds)" argument.

3) We have removed this confusing text, and use the regular design from the beginning.

4) We have added a parenthesized comment "(as it normalizes counts internally)" to clarify this.

5) We have rewritten the paragraph.

6) We have added an explanation.

**Competing Interests:** No competing interests were disclosed.

---

## Comments on this article

Version 1

Reviewer Response 26 Oct 2015

**Davide Risso**

I would like to suggest to the authors and/or editors to make it easier / clearer for the reader to relate the F1000Research version of the workflow to the Bioconductor version. Unless I missed it, I did not see any link or mention of the Bioconductor workflow page (<http://www.bioconductor.org/help/workflows/rnaseqGene/>) here. Will the F1000Research channel replace the Bioconductor page as the only repository for the workflows in the future? Or will the two co-exist? If the latter, perhaps the two pages should link each other, as they complement each other: e.g., the Bioconductor page has a downloadable package while the F1000Research page has comments and discussions.

**Competing Interests:** No competing interests were disclosed.

---

The benefits of publishing with F1000Research:

- Your article is published within days, with no editorial bias
- You can publish traditional articles, null/negative results, case reports, data notes and more
- The peer review process is transparent and collaborative
- Your article is indexed in PubMed after passing peer review
- Dedicated customer support at every stage

For pre-submission enquiries, contact [research@f1000.com](mailto:research@f1000.com)

**F1000Research**